

<http://www.gcrc.uga.edu>

### Goals:

- To provide mechanisms for improved scientific exchange between coastal scientists and managers.
- To promote the incorporation of best-available scientific information into State and local resource management.



# GCRC Approach

## Facilitate interactions between scientists & managers

Listserv

Meetings, working groups

GCRC Colloquium

## Synthesize technical material

The effects of seismic surveys on marine organisms

Coastal resiliency funding opportunities

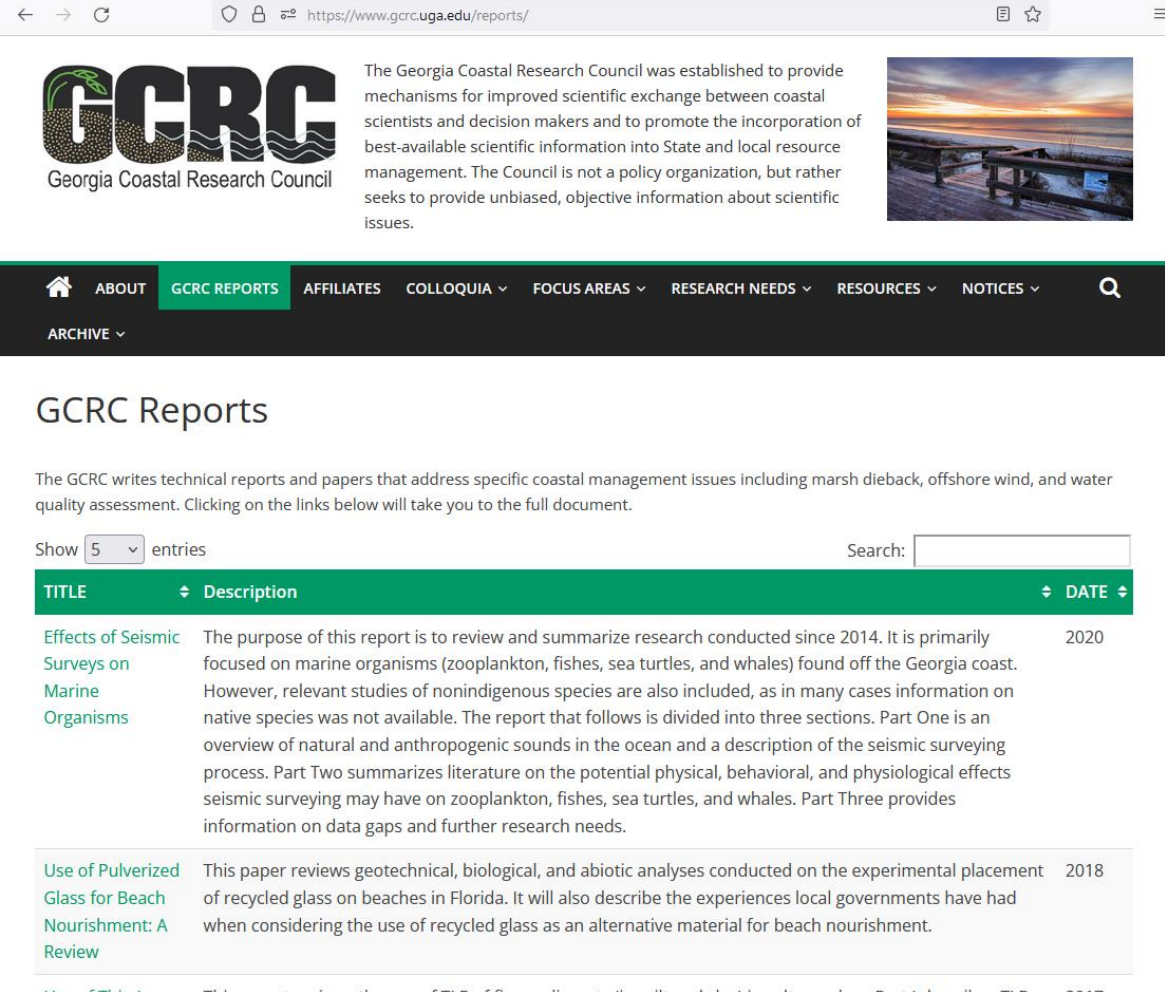
Assessment of vertical change in salt marshes

Hydrologic restoration in tidal marshes

## Communicate information

Coastal Advisory Committee, other venues

Website ([www.gcrc.uga.edu](http://www.gcrc.uga.edu))



The screenshot shows the GCRC Reports website. At the top, there is a navigation bar with links: ABOUT, GCRC REPORTS (highlighted), AFFILIATES, COLLOQUIA, FOCUS AREAS, RESEARCH NEEDS, RESOURCES, and NOTICES. Below the navigation bar, the page title is "GCRC Reports". A brief description of the GCRC is provided: "The Georgia Coastal Research Council was established to provide mechanisms for improved scientific exchange between coastal scientists and decision makers and to promote the incorporation of best-available scientific information into State and local resource management. The Council is not a policy organization, but rather seeks to provide unbiased, objective information about scientific issues." Below this, there is a search bar and a dropdown menu to show 5 entries. The main content area displays a table of reports with columns for TITLE, Description, and DATE.

TITLE	Description	DATE
<a href="#">Effects of Seismic Surveys on Marine Organisms</a>	The purpose of this report is to review and summarize research conducted since 2014. It is primarily focused on marine organisms (zooplankton, fishes, sea turtles, and whales) found off the Georgia coast. However, relevant studies of nonindigenous species are also included, as in many cases information on native species was not available. The report that follows is divided into three sections. Part One is an overview of natural and anthropogenic sounds in the ocean and a description of the seismic surveying process. Part Two summarizes literature on the potential physical, behavioral, and physiological effects seismic surveying may have on zooplankton, fishes, sea turtles, and whales. Part Three provides information on data gaps and further research needs.	2020
<a href="#">Use of Pulverized Glass for Beach Nourishment: A Review</a>	This paper reviews geotechnical, biological, and abiotic analyses conducted on the experimental placement of recycled glass on beaches in Florida. It will also describe the experiences local governments have had when considering the use of recycled glass as an alternative material for beach nourishment.	2018
<a href="#">Use of Thin Layers</a>	This report reviews the use of TLD of fine sediments (i.e. silt and clay) in salt marshes. Part I describes TLD	2017

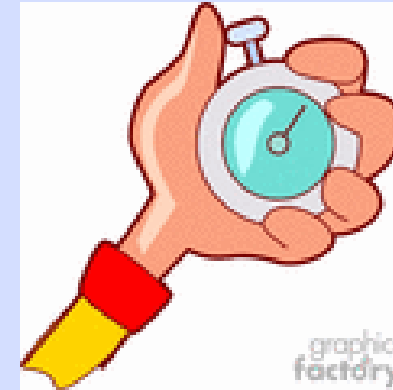
# GCRC 2024 Colloquium

---

Project reports

Introductions

- Management needs
- Research expertise



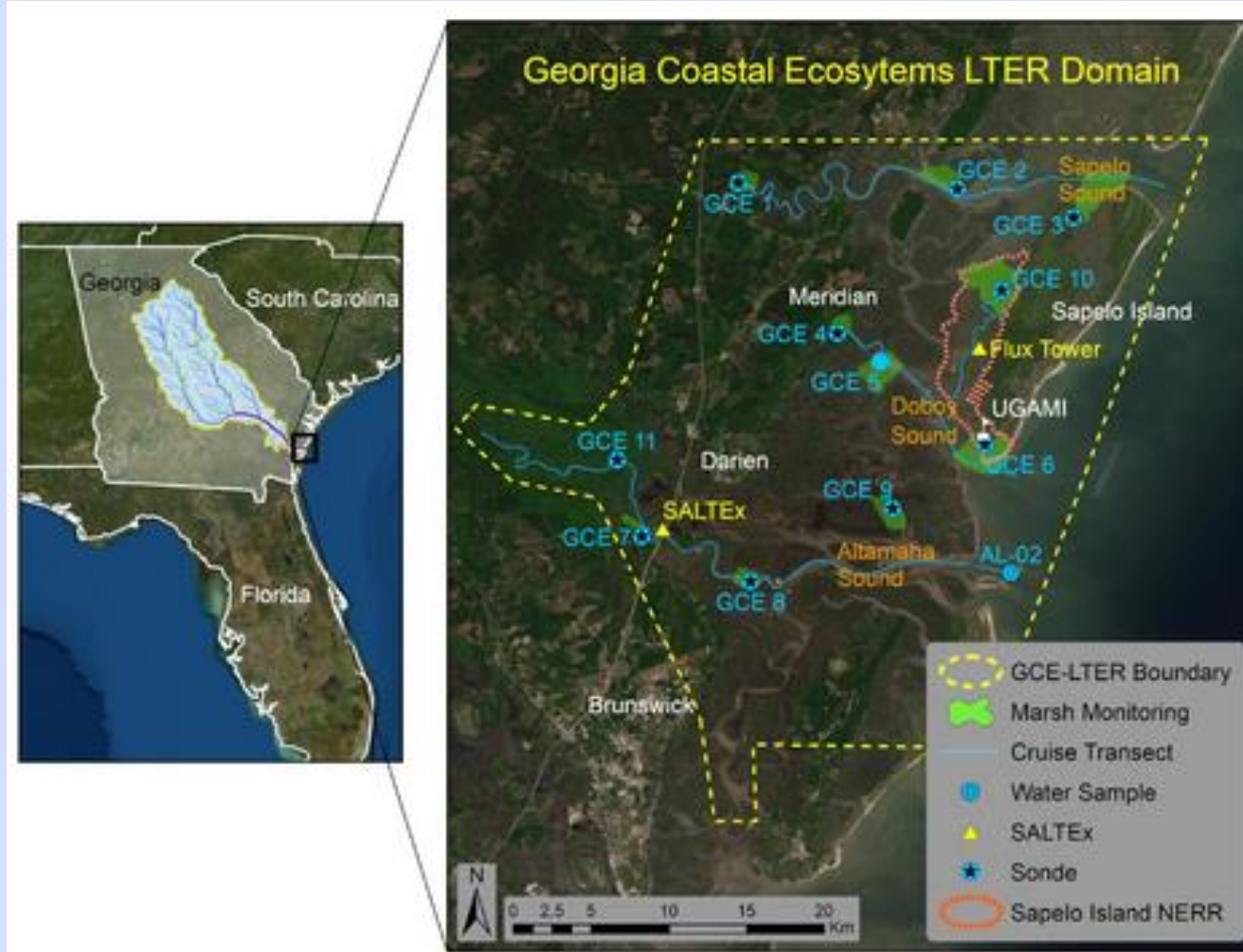


# Merryl Alber

Professor, Dept. of Marine Sciences &  
Director, UGA Marine Institute  
University of Georgia



# Georgia Coastal Ecosystems LTER



Studying long-term change  
in estuaries and marshes.



- 2000-present
- 22 co-PIs
- 10 institutions
- <https://gce-lter.marsci.uga.edu/>



# Current projects (& collaborators)

- Tracking habitat transitions along the estuarine salinity gradient (Christine Hladik)
- Using drones to identify wrack disturbance (Deepak Mishra)
- Evaluating changes in creek slumping and marsh fragmentation (Clark Alexander)
- Estimating belowground biomass as a measure of marsh resilience (Jessica O'Connell)





# UGA Marine Institute, Sapelo Island



*UGAMI provides exceptional opportunities for research and education in coastal ecosystems*



# GCRC 2024 Colloquium

Project reports

Introductions

- Management needs
- Research expertise

Program overviews

Discussion: Mangroves; Hurricanes

Research planning

Coffee breaks!

