



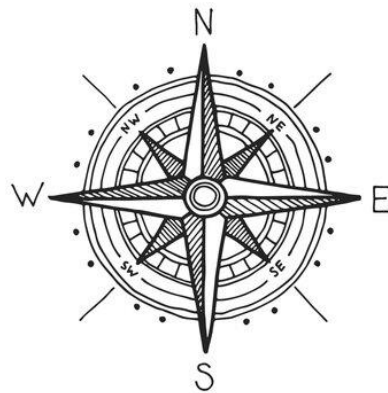
CRD Report: Living Shorelines

Meghan Angelina
October 16, 2024

Challenges and Actions from the State's Perspective

Challenges

- Lack of demand
- Many engineers and contractors have limited living shorelines experience
- No known private funding opportunities



Actions

- Established an internal group that focuses on how to put living shorelines on an equal and ultimately better playing field
- Workshop trainings for engineers, contractors, and local governments
- Work with partners to continue to seek diverse funding opportunities

Shoreline Policy and Resilience Review Team

- CRD Internal Team - Regulatory and Non-Regulatory Members
- All bank stabilizations are authorized under a CMPA permit



Living Shoreline Trainings for Practitioners

- Focus on engineer, contractor, and landscaper participation
- Twice per year – south and north locations
- Host trainings on site of a living shoreline
- Continue offering credits and certification of completion
- Include sufficient permitting information
- Hear from people who have experience or who have implemented these projects



Living Shoreline Monitoring



Post Office Creek/Long
Tabby – Looking South, 4/27
at 9:30 AM



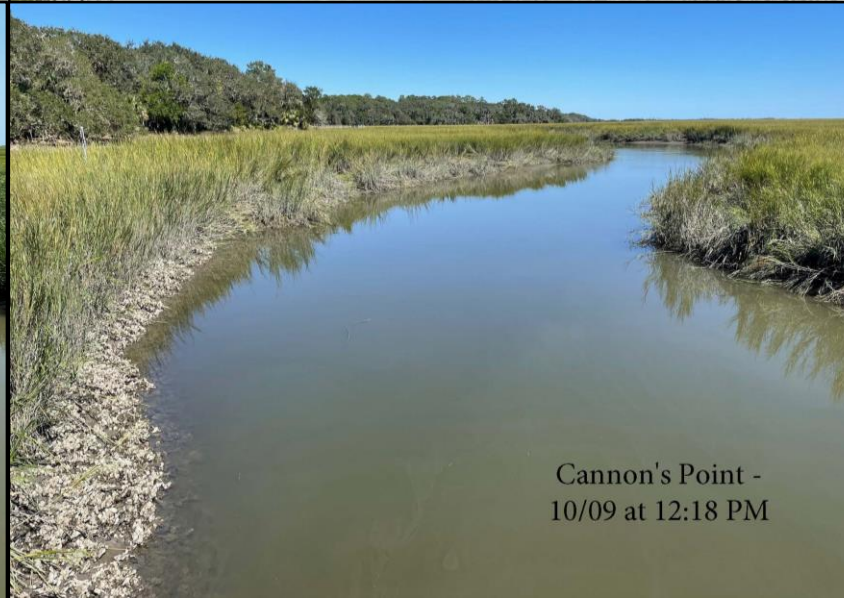
Long Tabby - 10/06 at 10:15 AM



Long Tabby - 04/23/2024 at 3:20 PM



Cannon's Point -
4/29 at 11:00 AM



Cannon's Point -
10/09 at 12:18 PM

- Photo Catalog
- Completed with the help of the Georgia Living Shorelines Workgroup
- Monitoring in April and October of each year

Living Shorelines in Coastal Georgia: A Comprehensive Guide to Understanding and Designing Living Shorelines on the Georgia Coast



LIVING SHORELINES IN COASTAL GEORGIA

A Comprehensive Guide to Understanding & Designing Living
Shorelines on the Georgia Coast
2024

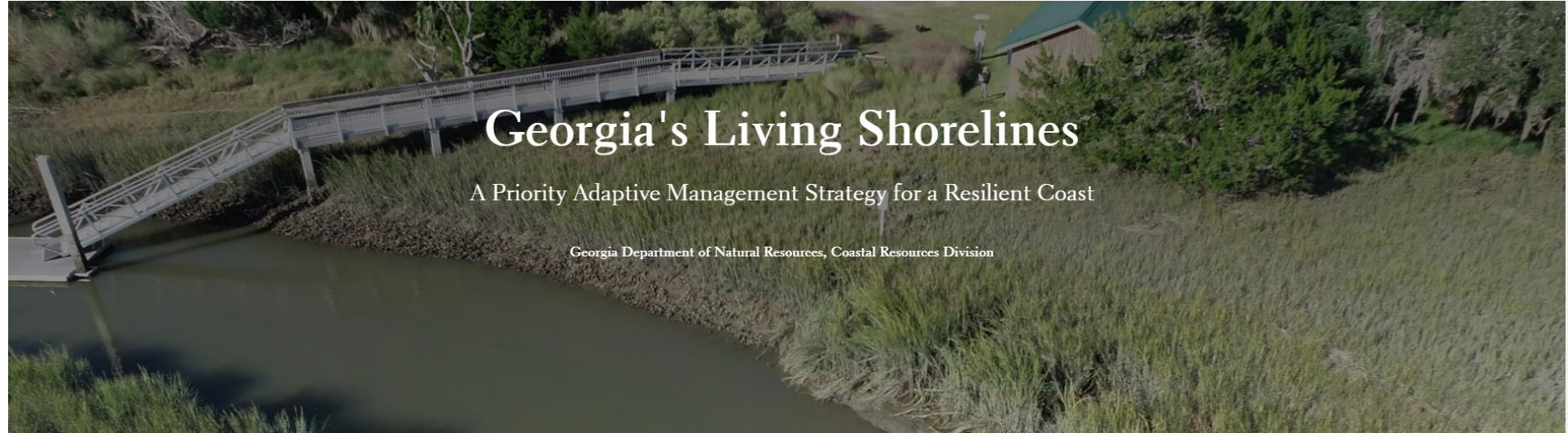


Table of Contents

Audience and Use	1
Living Shorelines Introduction	2
Site Suitability	3-6
Design Standards	7-12
Design Plans	13-16
Best Management Practices	17-20
Construction Techniques	21
Case Studies	22-24
Frequently Asked Questions	25-26
Links and Resources	27-28



CRD's Living Shoreline StoryMap



<https://arcg.is/1q98140>

Questions

meghan.angelina@dnr.ga.gov