



CRD Fisheries Research and Management

H. Jared Flowers, P.hD

**Coastal Georgia Colloquium '22
October 19-20, 2022**

Richmond Hill City Center, Richmond Hill, Georgia

Mission Statement:

To balance coastal development and protection of the coast's natural assets, socio-cultural heritage and recreational resources for the benefit of present and future generations.

CRD Sampling Surveys and Programs

Oversee fisheries surveys and programs:

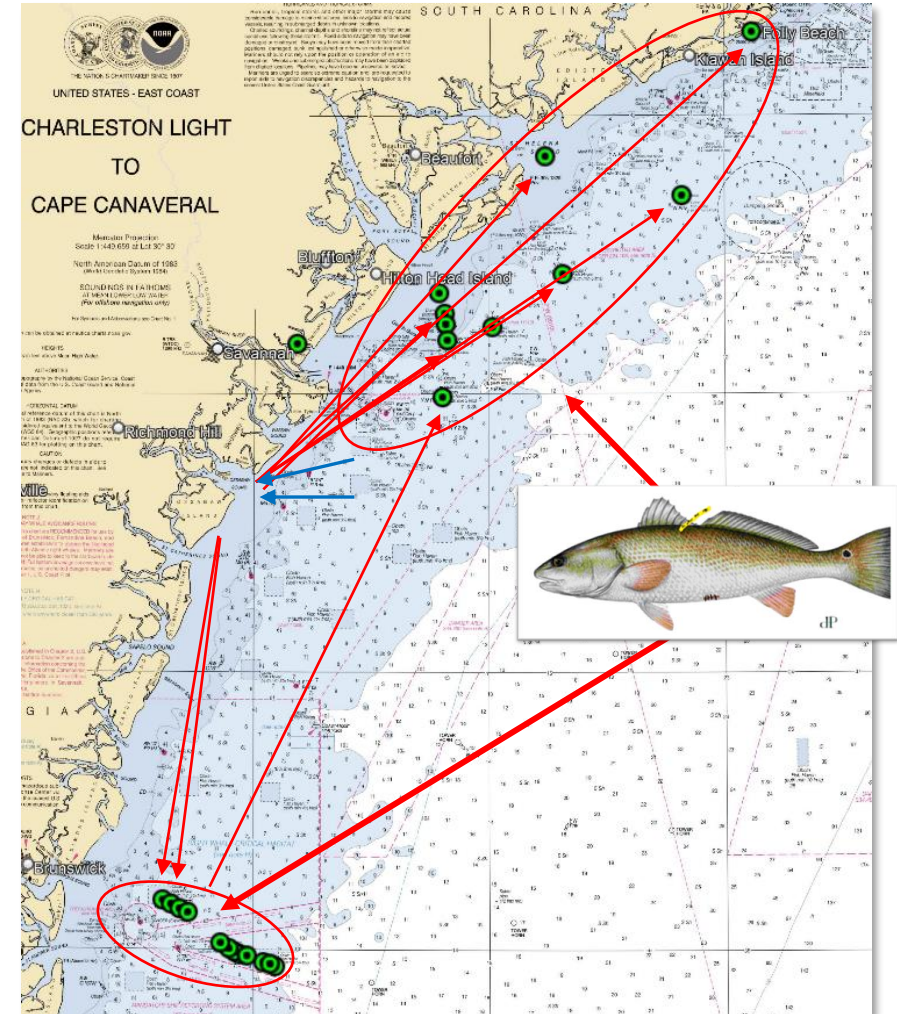
- **Marine Sportfish Population Health Survey**
- **Coastal Longline Survey**
- **The Escapement Project**
- **Marine Sportfish Carcass Recovery Program**
- **The Cooperative Angler Tagging Program**
- **Fish Ageing Lab**
- **American Eel Monitoring Survey**
- **Ecological Monitoring Trawl Survey**
 - One of the longest performed surveys in region
 - Shrimp data since 1976, all fish and inverts since 2003
 - Increased outside interest due to dataset
- **New vessels!**



Escapement Project- Offshore and Interstate Movement




- 72 Red Drum tagged in Wassaw and St. Simons sounds
- Receivers in sounds and offshore on reefs
- Can be detected by other organizations
- 8 detected outside of the study area
 - 6 traveled to SC
 - 2 moved south in GA
 - 1 later moved N to SC
- Smaller fish more stationary; larger fish mobile, more likely detected offshore
- Tagging will occur in both systems for two years



Red Drum, Red Drum, Red Drum

- Angler concerns prompted review of CRD Red Drum data
- Biological data indicated populations stable but annual variability
- Increasing coastal populations/impacts
- Sought angler input for decision making:
 - Town Halls
 - Angler satisfaction survey
 - 2022 survey conducted as update to 2017 survey
 - Statistically valid
- Proposed changes based on angler feedback and precautionary approach
- Satisfaction survey also sought information about other species to inform future management and research

Current	Year-round season; 14-23 inch slot; 5 fish daily creel and 5 fish possession limit
	
Proposed	Year-round season; 14-23 inch slot; 3 fish daily creel, 3 fish possession limit; 9 fish vessel limit; no charter guide/mate retention

For more information:



Reports and more at:
coastalgadnr.org

Jared Flowers
jared.flowers@dnr.ga.gov

