



Georgia Coastal Management Program

Living Shorelines

Meghan Angelina

Living Shorelines

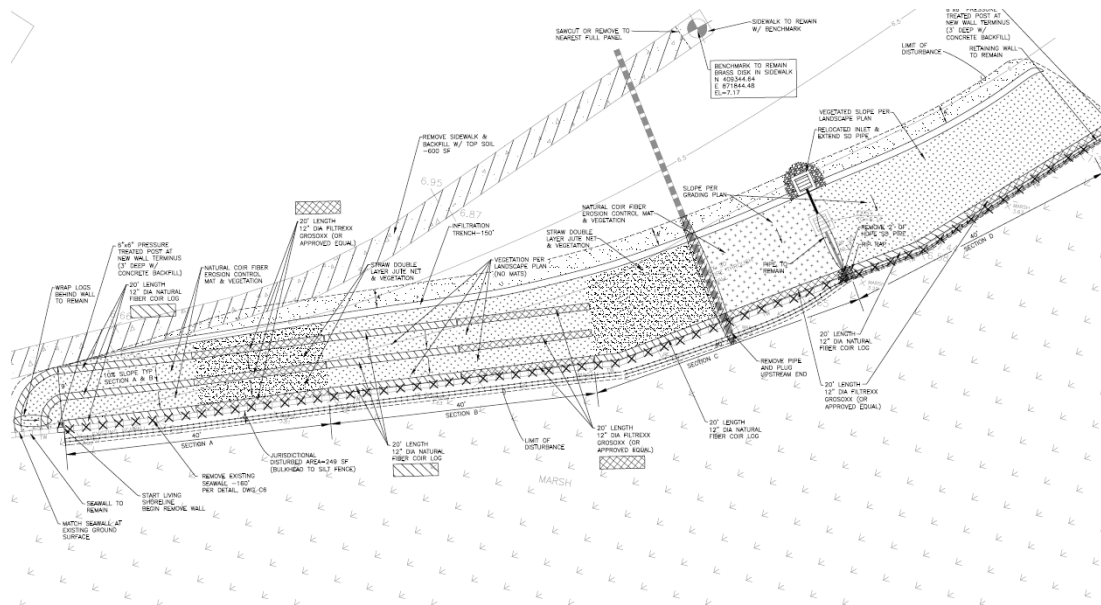
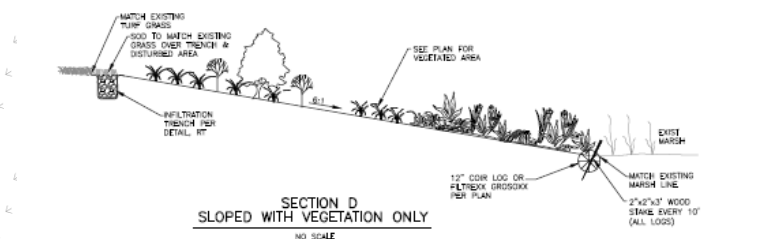
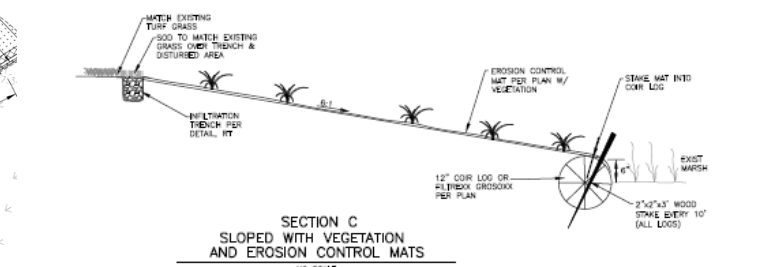
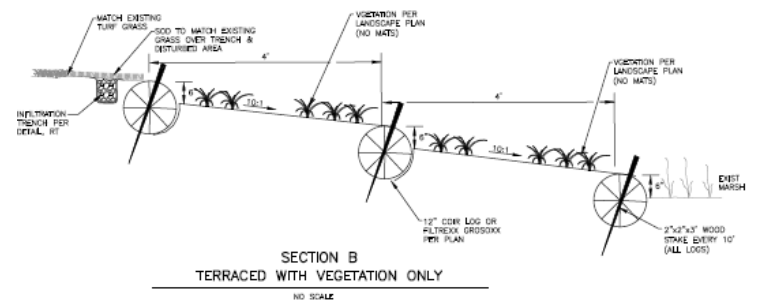
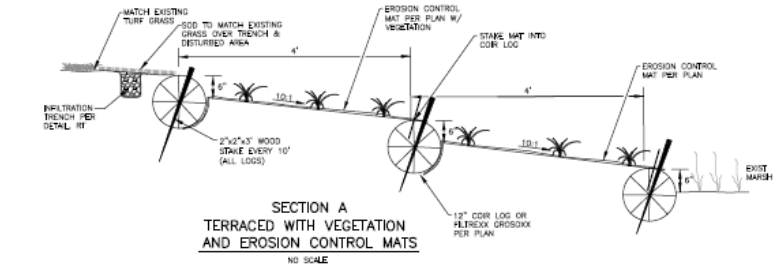


- Offer technical assistance
- Continuing to work on living shoreline implementation and policy
- The Living Shorelines Workgroup



- Upcoming EWN project (2023 start date)
 - Partnering with the Army Corps' Engineer Research and Development Center (ERDC)

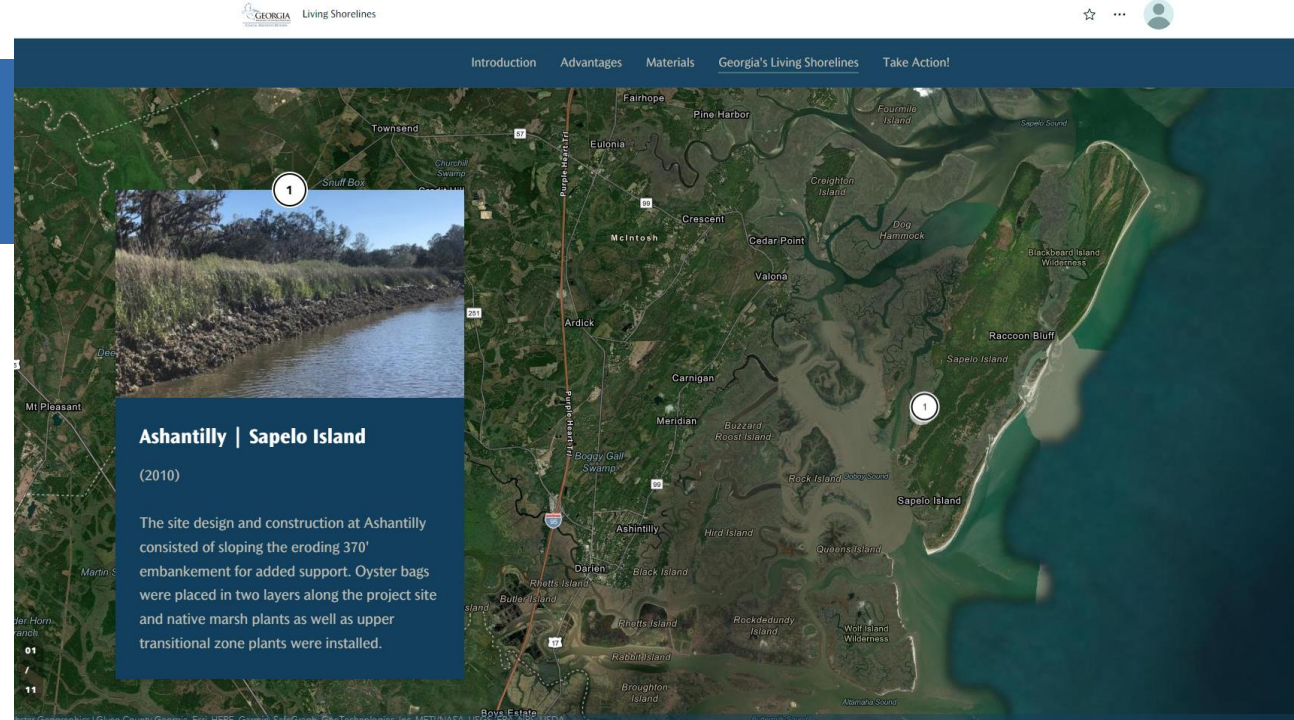
DNR's Coastal Regional Headquarters Living Shoreline



- 160 linear feet
- Demo project with 4 distinct sections

Web-based Resources

CRD's Living Shorelines StoryMap Update



G-WRAP – Fetch Tool

