

Underground plant parts are dead but not fully decayed.



M00721D-4

Dead marsh sample showing extensive decay.

M00709-D1



Dead marsh sample showing moderate amount of decay.



The only living shoot observed from dead marsh samples examined thus far.



## Different types of insect damage in stem.



Damage caused by unknown herbivore.

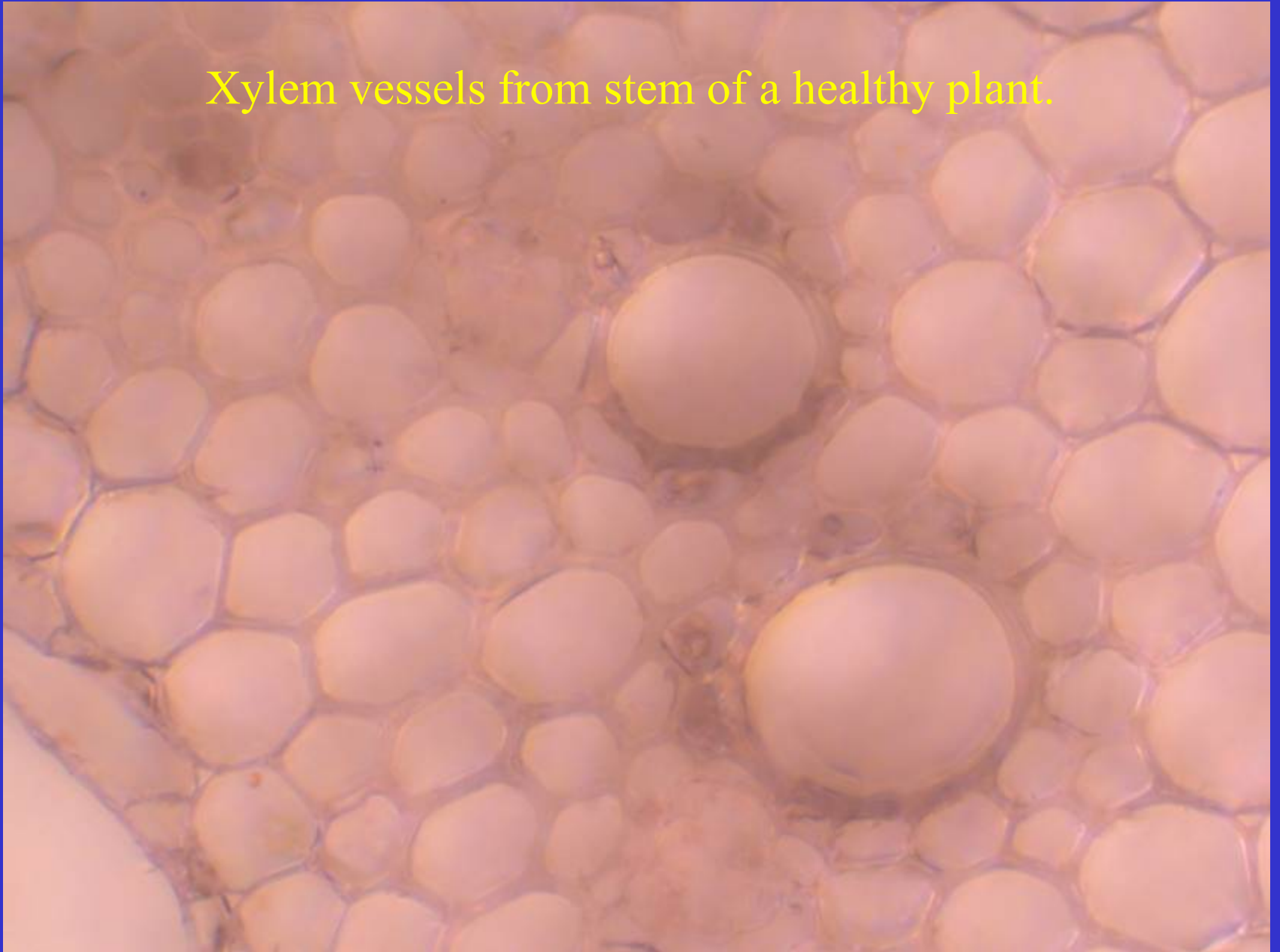


Nodules.



MPO709-T

Xylem vessels from stem of a healthy plant.





Clogged xylem vessels from stems  
of dead marsh plants.

