

UGA- CENTER FOR RESEARCH + EDUCATION AT WORMSLOE (CREW)

**SARAH ROSS
COLLEGE OF ENVIRONMENT & DESIGN**



Wormsloe Fellows 2018:

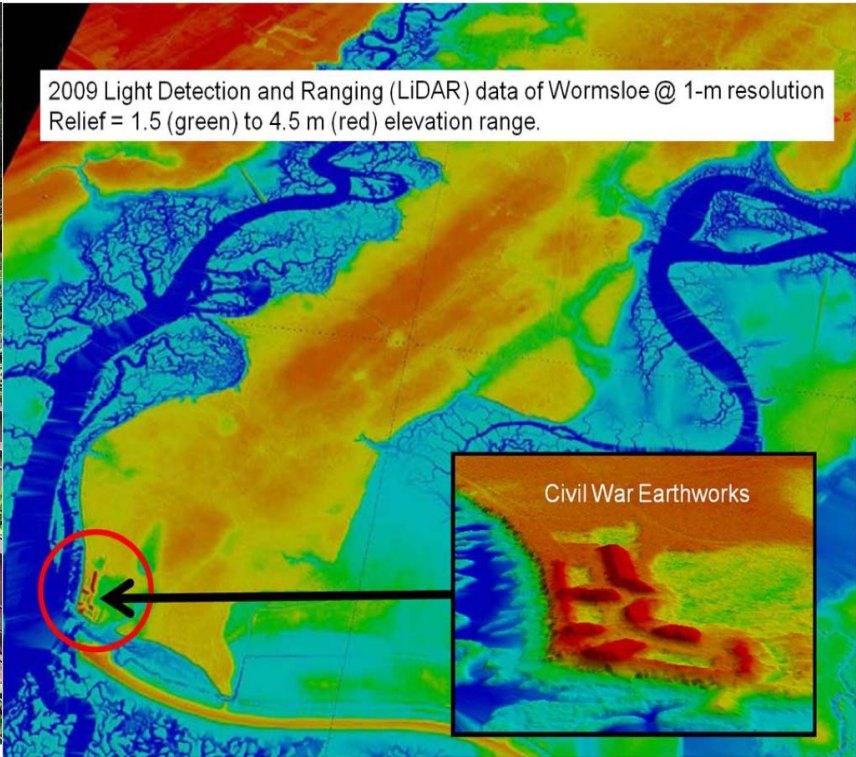
Agroecology- Climate Change Induced Coastal Plant Stress

Maritime Forest-Saltmarsh Energetics Flow

Living Shoreline Policy/Implementation Comparison

Improved workflow with SLAMM and SLEUTH models

**MAYMESTER 2019: APPLIED FIELD ECOLOGY-- ODUM SCHOOL OF ECOLOGY, FRANKLIN COLLEGE,
COLLEGE OF ENVIRONMENT & DESIGN
COLLEGE OF ENGINEERING, WARNELL SCHOOL OF FORESTRY, STATE BOTANICAL GARDEN**



RESEARCH PUBLICATIONS 2018

- **Host and parasite thermal ecology jointly determine the effect of climate warming on epidemic dynamics. Alyssa-Lois M. Gehmana, Richard J. Halla, and James E. Byers, Odum School of Ecology, University of Georgia. National Academy of Sciences**
- **Do characteristics of pollinator-friendly gardens predict the diversity, abundance, and reproduction of butterflies? Ania A. Mejewska, Stuart Sims, Seth J. Wegner, Andrew K. Davis and Sonia Altizer. Odum School of Ecology, University of Georgia. Insect Conservation and Diversity**
- **Herpetofaunal Inventory of Wormsloe State Historic Site, Savannah, Georgia, Nancy K. O'Hare, Marguerite Madden. Southeastern Naturalists.**
- **Phytolith evidence of historical rice cultivation at Wormsloe Historic Site, Georgia, Alessandro Pasqua, Liovando Marciano da Costa, Ervan Garrison. Journal of Archaeological Science Reports.**

