

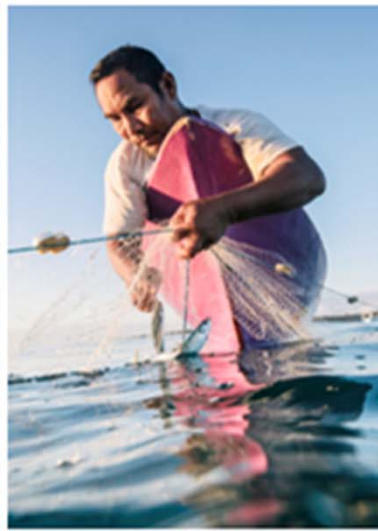
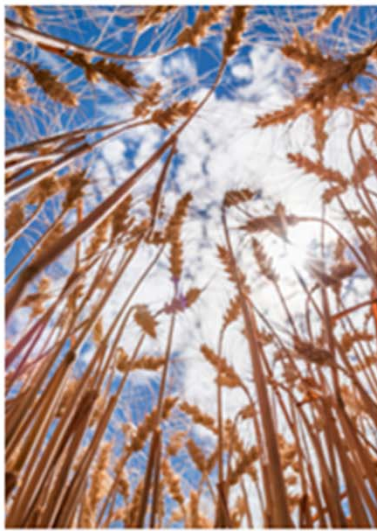


**Christi Lambert**  
*Coastal and Marine Conservation*  
*Director,*  
Georgia Chapter  
clambert@tnc.org



# Our Mission

*To preserve the lands and waters on which all life depends*



## OUR VISION



## OUR STRATEGY



## OUR PRIORITIES

A world where  
people and  
nature thrive.

PROTECT

TRANSFORM

INSPIRE

Protect Land and Water

Tackle Climate Change

Provide Food and Water Sustainably

Build Healthy Cities

Connect People and Nature





## **Conservation Themes**

- **Planning**
- **Protection**
- **Management**
- **Research and Monitoring**
- **Restoration**
- **Outreach**
- **Coastal Resilience**

# Camden County pilot project

- Building **Online Decision Support Tools** via coastalresilience.org that address identified needs including community planning using flooding threats, flood risk awareness to the public and how to prioritize preservation of flooded areas for open space CRS points.
- A voice in **local plans** such as comprehensive plans, hazard mitigation plans, and disaster recovery plans to promote incorporation of scientific data and consider conservation to help future landuse planning around coastal hazards.
- **Outreach and education to the public** on the role of natural infrastructure on coastal hazards.
- Seeking, assisting or advising **on the ground projects or opportunities** that improve/build coastal resilience.
  - Land conservation
  - Restored hydrology



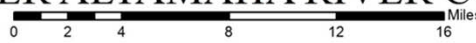
- Identifying and recommending **local policy changes** that can improve a community's resilience using natural infrastructure. (CRS Green Guide?)
- **Cumberland Island** conservation

# Project Outline

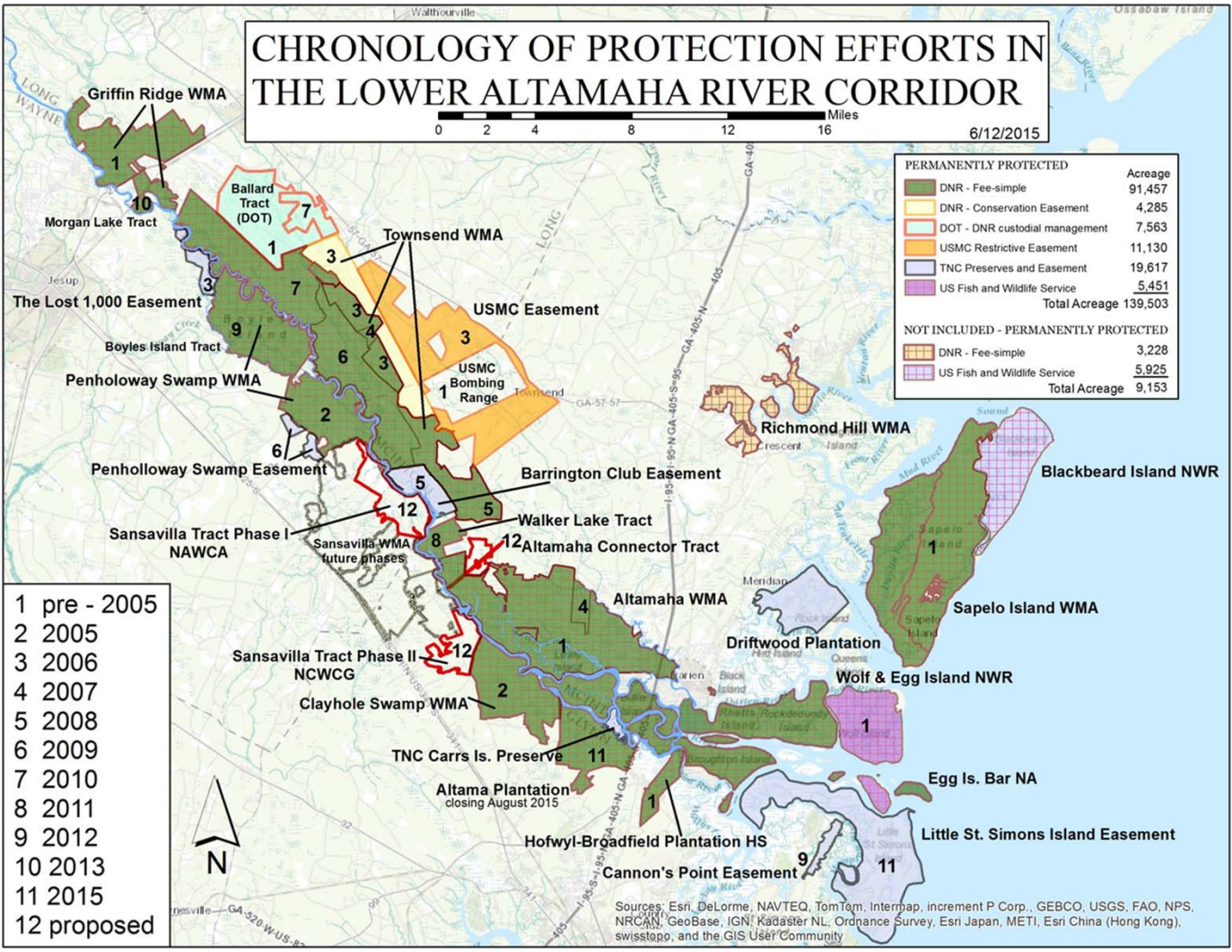
<p><b>Project Name:</b> Camden County 'Rise Ready' Coastal Resiliency Project.</p>	<p><b>Timeline</b> August, 2018 – Sept, 2020</p>
<p><b>Project Goal</b>          To 1) Implement a 'Rise Ready' outreach and education program and 2) create an online decision support tool consisting of 3 web applications that provide flood risk awareness, community planning using flood science and encourages preservation of open space in floodprone regions for CRS credits.</p>	
<p><b>Scope</b></p> <p>All Year 1 and Year 2 Coastal Incentive Grant work, and pre-work required to prepare.</p> <p>Coastal Resilience Work group meetings, coordination and clarity in roles.</p> <p>Development of 3 web applications (mobile friendly Flood Risk Awareness, Community Planning and CRS Open Space Explorer) of the Camden 'Rise Ready' Online Decision Support Tool.</p> <p>Pre and post tool development trainings (4 each year), with year 1 focused on FIRM and SLR/SS outreach and year 2 focused on CRS open Space outreach and tool training</p> <p>Subcontracts and billing required for project implementation (TNC &amp; CRC).</p> <p>Match and budget requirements and needs.</p>	<p><b>Deliverables for year 1</b></p> <ul style="list-style-type: none"> <li>• Coastal Resilience.org website regularly updated with articles of interest</li> <li>• Advertising material (press release, social media, newspaper, signage, flyers, etc) for 4 trainings to Camden Co</li> <li>• Training workshop materials/curriculum &amp; stakeholder feedback from audiences from 4 workshops.</li> <li>• Training workshops on FIRM maps (2) and SLR/SS (2) to two groups of audiences (residents, insurance agencts, real estate AND elected officials and community planners)</li> <li>• Developed and distribution of Flood Risk Awareness and Community Planning online applications.</li> </ul> <p><b>Deliverables for year 2</b></p> <ul style="list-style-type: none"> <li>• Advertising material (press release, social media, newspaper, signage, flyers, etc) for 4 trainings to Camden Co</li> <li>• Training workshop materials/curriculum &amp; stakeholder feedback from audiences from 4 workshops.</li> <li>• Training workshops on completed 2 Apps (Flood Risk &amp; Community Planner) (2) to above listed audiences and trainings workshops (2) on CRS Open Space Explorer to local govt/planners and CRS User group.</li> <li>• Developed and distributed CRS Open Space Explorer application</li> <li>• Policy recommendations</li> </ul> <p>Resources/Funding: Coastal Incentive Grant (see budget for details)</p>



# CHRONOLOGY OF PROTECTION EFFORTS IN THE LOWER ALTAMAHA RIVER CORRIDOR



6/12/2015



- 1 pre - 2005
- 2 2005
- 3 2006
- 4 2007
- 5 2008
- 6 2009
- 7 2010
- 8 2011
- 9 2012
- 10 2013
- 11 2015
- 12 proposed

PERMANENTLY PROTECTED	
DNR - Fee-simple	91,457
DNR - Conservation Easement	4,285
DOT - DNR custodial management	7,563
USMC Restrictive Easement	11,130
TNC Preserves and Easement	19,617
US Fish and Wildlife Service	5,451
<b>Total Acreage</b>	<b>139,503</b>
NOT INCLUDED - PERMANENTLY PROTECTED	
DNR - Fee-simple	3,228
US Fish and Wildlife Service	5,925
<b>Total Acreage</b>	<b>9,153</b>

Sources: Esri, DeLorme, NAVTEQ, TomTom, Intermap, increment P Corp., GEBCO, USGS, FAO, NPS, NRCAN, GeoBase, IGN, Kadaster NL, Ordnance Survey, Esri Japan, METI, Esri China (Hong Kong), swisstopo, and the GIS User Community



