



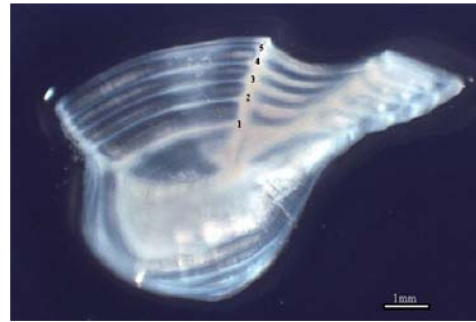
GCRC Coastal Colloquium

Fisheries Report
Kathy Knowlton
September 12, 2018

Marine Fisheries Section – Projects & Surveys

Fishery Independent Data

- Large Trawl (Jan-Dec) 1976-
- Small Trawl (Jan-Dec) 1979-85, 2005-2017
- Trammel Net (Sep-Nov) 2002-
- Gill Net (Jun-Aug) 2002-
- Coastal Longline (May-Dec) 2006-
- Estuarine Longline (May-Sep) 1998-2015
- American Eel Survey (Jan-Mar) 2003-
- Juvenile Shad Seine Survey 2010-
- Acoustic Tagging 2011-



Fishery Dependent Data

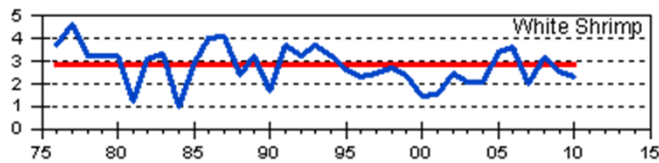
- Commercial Harvest 1989-
- Bandit Reel Fishery 1998-2016
- Crab Trap Survey 2003-2009
- Recreational Angler Survey 2000
- Carcass Recovery 1997-
- Cooperative Tagging 1999-
- Bycatch Characterization Studies
- Life History Studies



Marine Fisheries Section – Partnerships

What GADNR can provide

- ✓ Long-term data sets



- ✓ Sampling platforms with regularly scheduled sampling



- ✓ Sampling gear & public access development expertise



What GADNR needs

- Collaborative approaches to research projects
- Socio-economic data
- Identification & mapping of critical fish habitat
- Contractual services



Overcoming the Great Divide

Applied Science

→ fisheries
management



Research

→ novel
approaches

Research Needs

GADNR Coastal Incentive Grants

Economic impacts of tournaments, artificial reefs, charter businesses

Abundance & distribution of invasive species, impacts on native species

Characterization of discards associated with recreational fisheries

CoastalGadnr.org/CIGApplying



GADNR State Fishery Management Plans

Sheepshead tagging for seasonal movement

Crab pot & various bait effectiveness

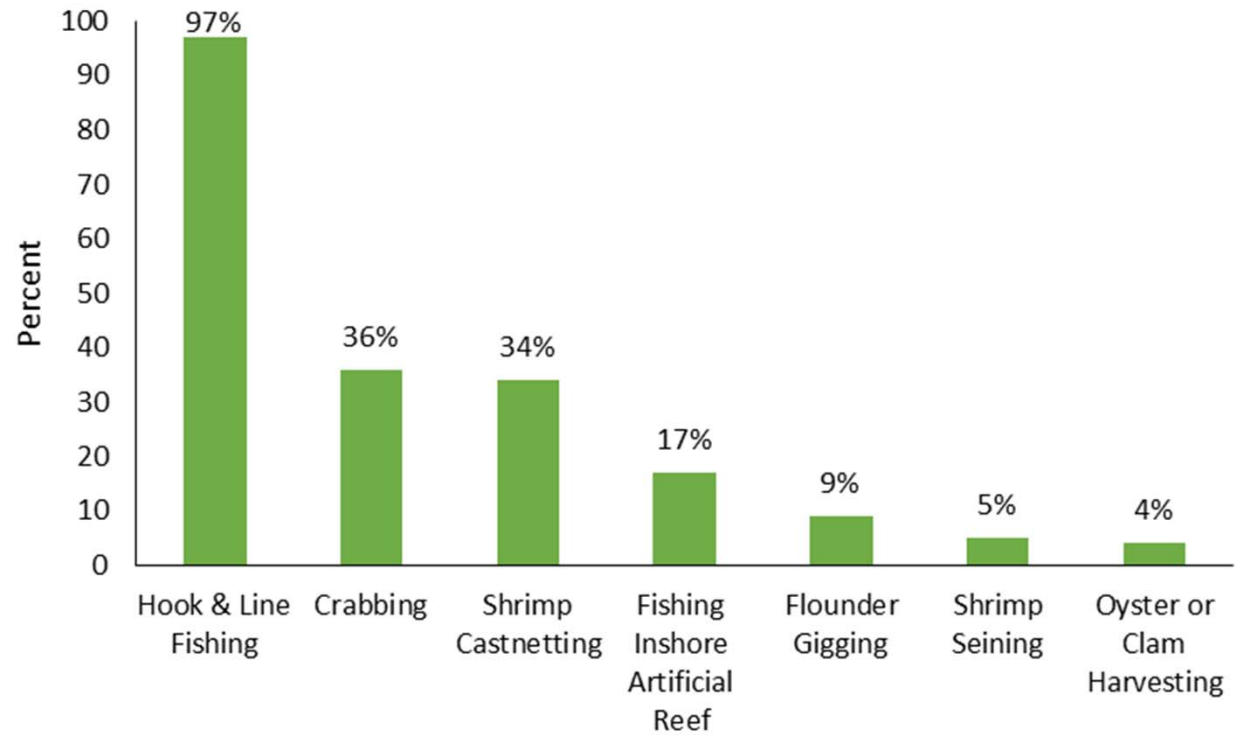
Examine seasonal abundance of cannonball jellyfish

CoastalGadnr.org/RecreationalFishing

CRD Saltwater Fishing Satisfaction Survey



Average number days with
any saltwater fishing activity = 25 days



Saltwater Fishing Activities

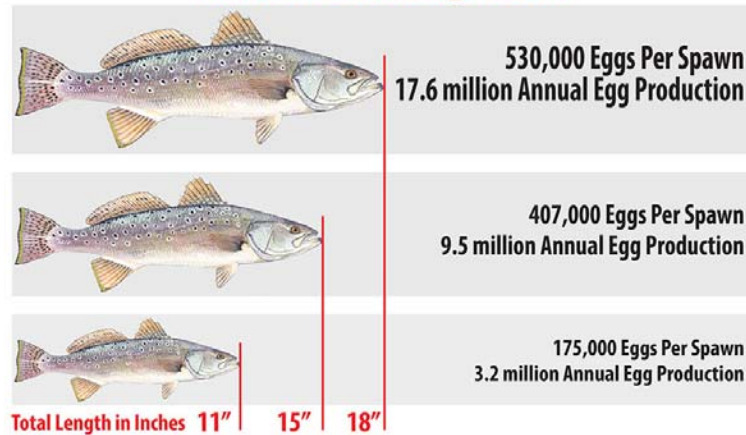
2016 Spotted Seatrout Regulatory Change

A 14-inch female seatrout will produce 20% more eggs during each spawn compared to a 13-inch fish.

Size (in)	Age 1	Age 2+	Whole Weight (lbs)	Predicted # of Eggs
13	56%	44%	0.9	248,724
14	30%	70%	1.1	304,070



Spotted Seatrout Operation R.O.E. Release Over Eighteen



An individual spotted seatrout will spawn multiple times during the spawning season (April to September). Anglers are being asked to voluntarily release trout over 18 inches during the period January - September.

