

KEVIN HAAS

Associate Professor

Associate Chair for Undergraduate Programs



Co-Director



Research Interest

Coastal Engineering

Shoreline change

Marsh circulation

Shelf/Estuary circulation

Ocean Energy

Tidal Energy

Wave Energy

Ongoing Projects

ONR - Inner shelf modeling

GDOT – Shoreline change

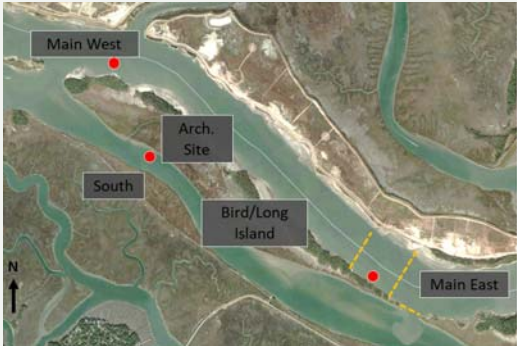
DOE – Wave energy classification

DOE – Tidal energy resource assessments

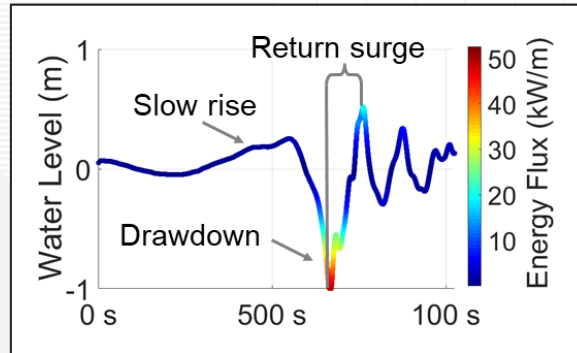
ARPA-E – Modeling tools for macroalgae production



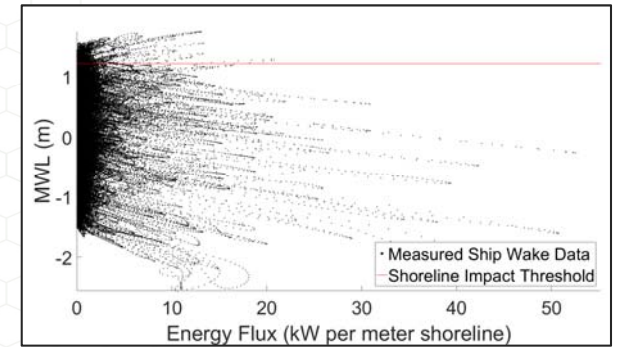
SHIP WAKE IN THE SAVANNAH RIVER



Example Ship Wake Measurement



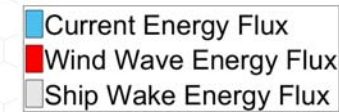
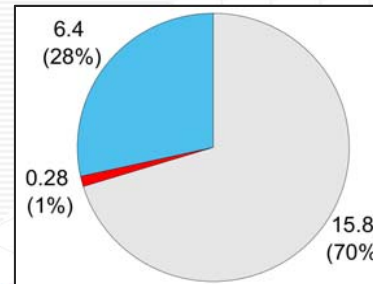
Energy Flux from Ship Wakes



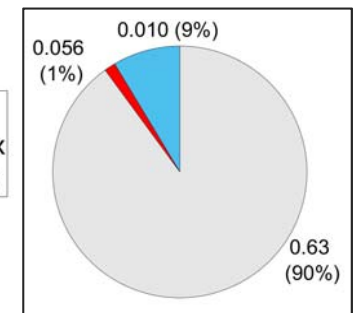
Deployed Aquadopps into Savannah River



Total Energy

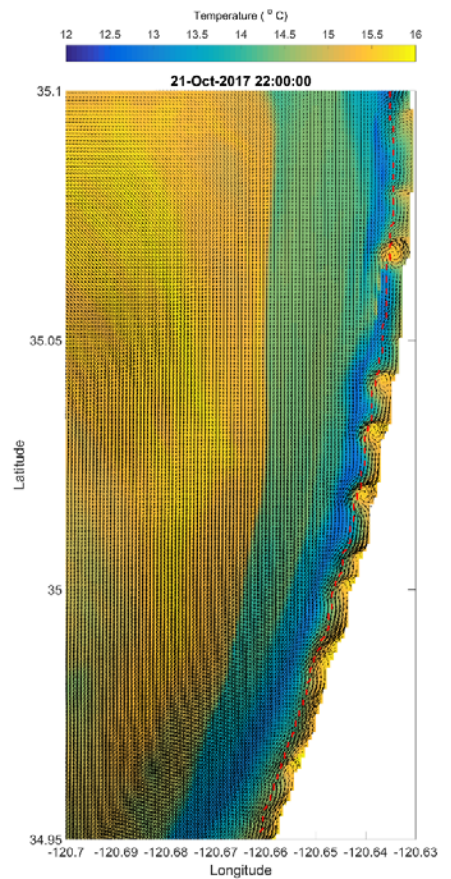
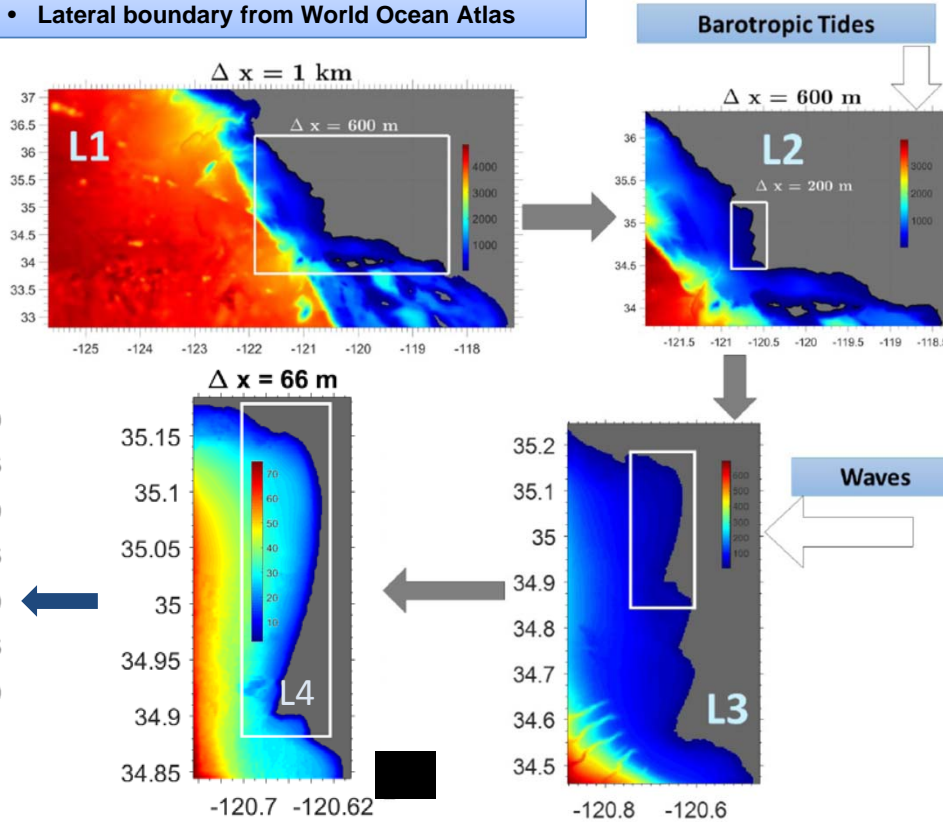


Energy with Scarp Impact



INNER SHELF MODELING

- 3km UCSC ROMS
- COAMPS daily-averaged/hourly atm. forcings
- Lateral boundary from World Ocean Atlas



INNER SHELF MODELING

