



John Carroll

Georgia Southern University

jcarroll@georgiasouthern.edu

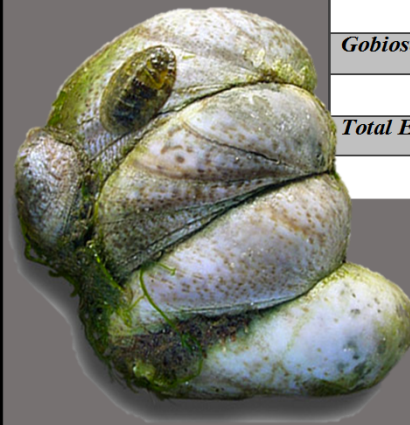
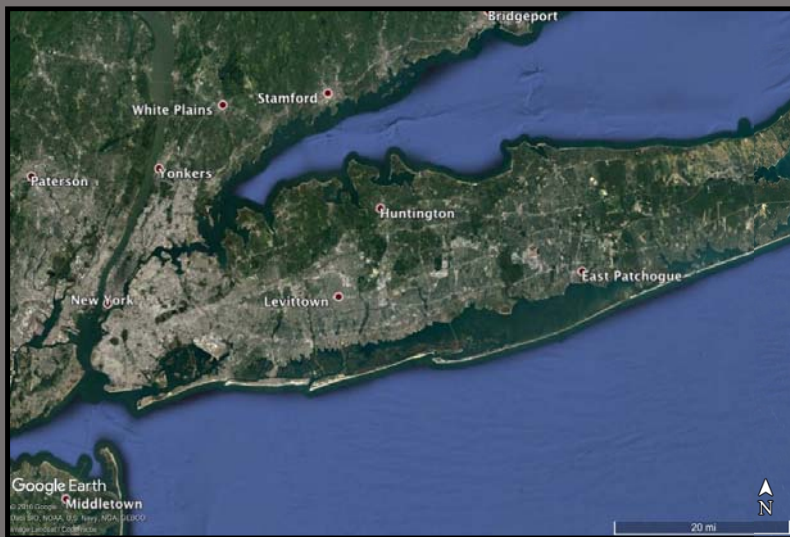
Research Interests Include:

- Oyster reef restoration and ecology
- Oyster aquaculture
- Seascape ecology
- Larval settlement & recruitment



Current Projects

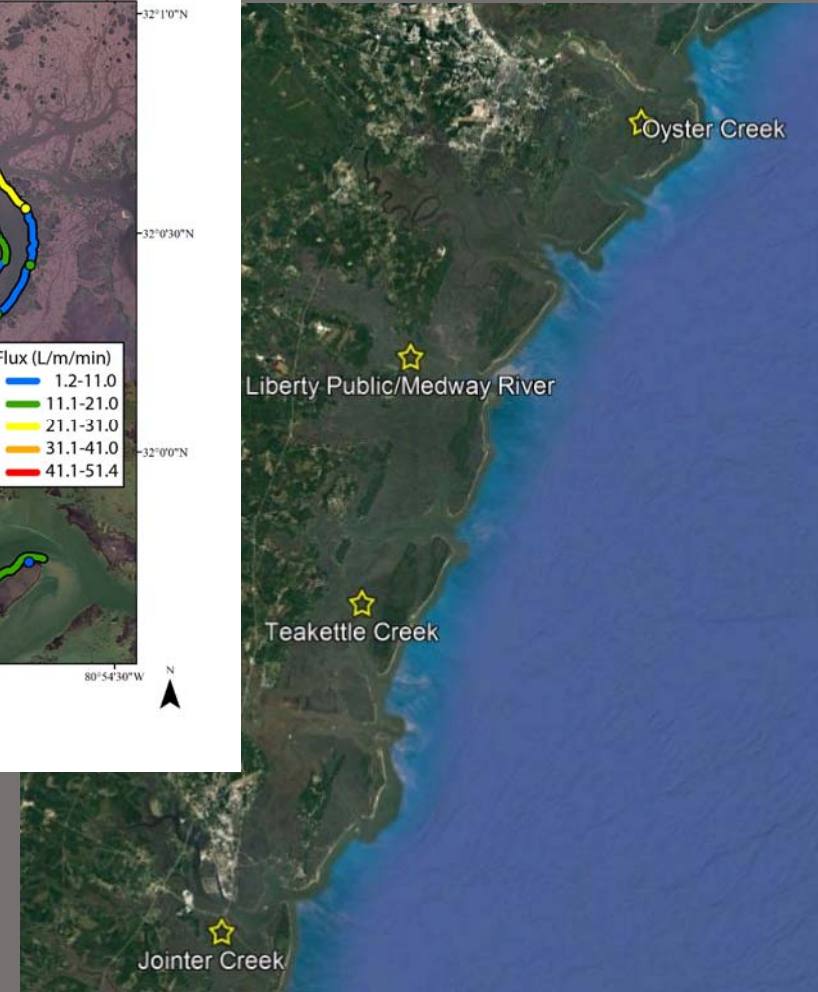
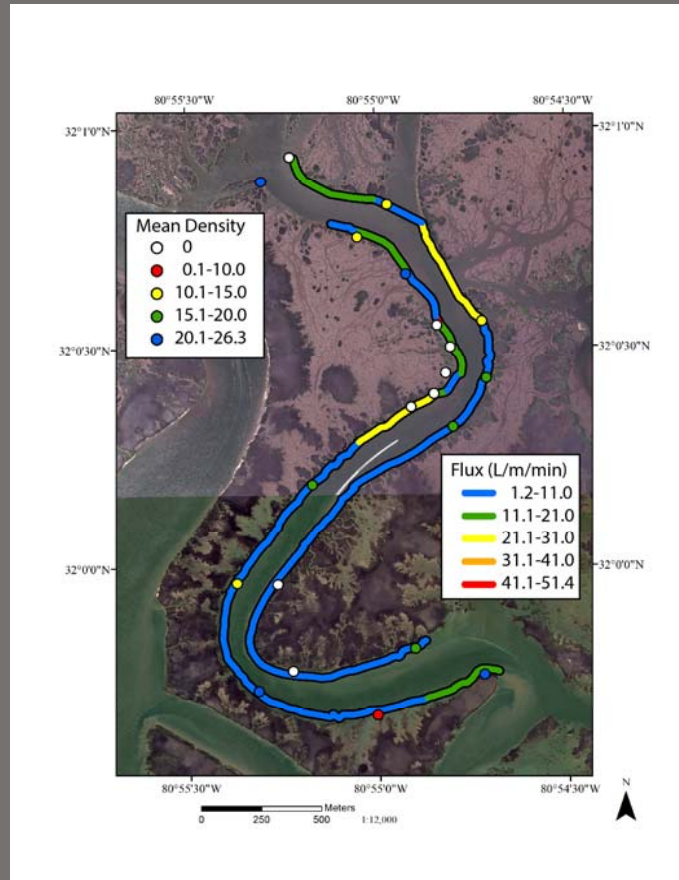
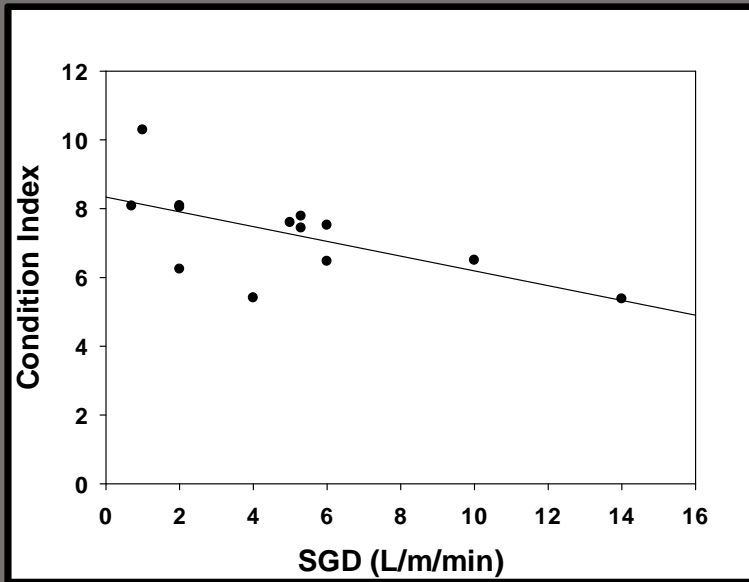
- NYDEC funding – exploring the utility of a non-commercial shellfish species for restoration



| Species | Common Name | Abundance (per m ²) |
|-------------------------------|---------------------------|---------------------------------|
| <i>Callinectes sapidus</i> | Blue crab | 2.63 ± 2.21 |
| <i>Carcinus maenas</i> | Green crab | 0.38 ± 0.26 |
| <i>Dyspanopeus sayi</i> | Black-finger mud crab | 225.50 ± 61.30 |
| <i>Libinia</i> sp. | Spider crab | 0.50 ± 0.27 |
| <i>Pagurus longicarpus</i> | Long claw hermit crab | 8.25 ± 2.70 |
| <i>Crangon septemspinosa</i> | Sand shrimp | 1.63 ± 1.03 |
| <i>Palaemonetes</i> sp. | Grass shrimp | 4.00 ± 1.77 |
| <i>Eupleura caudate</i> | Thick-lipped oyster drill | 6.50 ± 5.53 |
| <i>Urosalpinx cinerea</i> | Atlantic oyster drill | 10.38 ± 3.73 |
| <i>Asterias forbesi</i> | Forbe's sea star | 0.38 ± 0.18 |
| <i>Sclerodactyla briareus</i> | Sea cucumber | 0.50 ± 0.43 |
| <i>Gobiosoma boscii</i> | Naked goby | 19.50 ± 7.45 |
| Total Epifauna | | 281.63 ± 88.36 |

Current Projects

- GA Sea Grant – examining the impacts of groundwater flux on oyster condition, recruitment & growth in Georgia creeks with Dr Jacque Kelly @ GSU Geology



Current Projects

- GA DNR CIG funding – exploring the potential for mussels to be incorporated into living shorelines projects to improve marsh grass growth and resilience



Student Projects

- Sex change and stressors in snails
- Sea turtle hatch success
- Oyster population genetics and disease
- Boring sponge-oyster interactions
- Petrolisthes effects on oyster growth and recruitment