

WELCOME TO GCAMP!

The Georgia Coastal and Marine Planner (GCAMP) is a revolutionary geospatial gateway to Georgia-specific maps, data, and resources relevant to coastal and marine planning. Click below or on the above links to get started. Please enjoy.

EXPLORE MORE

Data Catalog

Welcome to the Data Catalog. Click an image below for a dataset description and links to the REST endpoint and complete metadata.
[Click here to download the GCAMP data list.](#)

TYPE OF DATA

All Data Layers

Human Use

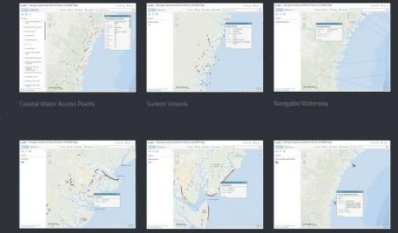
Jurisdictions and Boundaries

Natural Resources and Habitat

Fisheries

Physical

Others



Maps and Apps

Discover, explore and analyze GCAMP's geospatial data through our ArcGIS online maps and story maps. Click an image below to go directly to a specific map or story map.

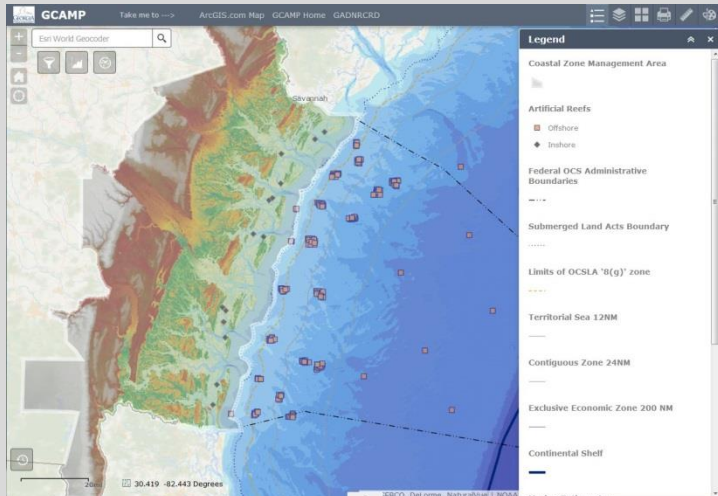


GCAMP Map

GCAMP Energy Map

GCAMP Fisheries Map

Built using ESRI's Web App Builder, the Georgia Coastal and Marine Planner (GCAMP) Map contains custom tools designed to make utilization of GCAMP data easy, useful and informative. GCAMP Map Application users can perform custom queries on various datasets, view data charts, draw and measure features, turn layers on and off, adjust layer transparency, view attribute tables, and more. For more information, see the following ESRI tutorial.



GCAMP - Introduction

1. The GCAMP Map on ArcGIS.com

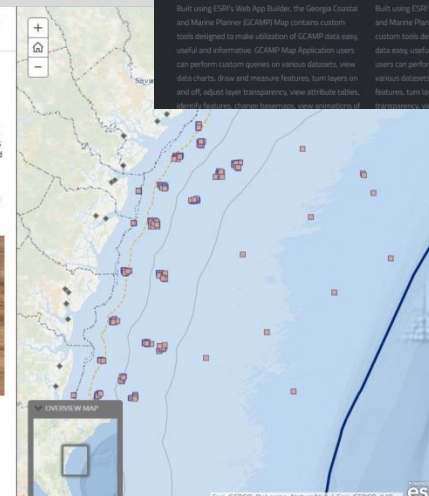
The Georgia Coastal and Marine Planner (GCAMP) map on ArcGIS.com is a suite of interactive mapping tools and resources designed to aid state regulators and planners in their decision-making processes of how to allocate property off the coast of Georgia to potential developers. On ArcGIS.com, users can utilize an in-depth map that allows them to visualize how different parts of Georgia's coast are used, regulated, and protected by state and federal agencies.

(Note: These story map presentations draw from the existing GCAMP map in ArcGIS, but in order to use the tools – such as the Measurement tool or the Drawing tool – users must open the map separately through arcgis.com.)

The app is accessible on computers, tablets, and smart phones.

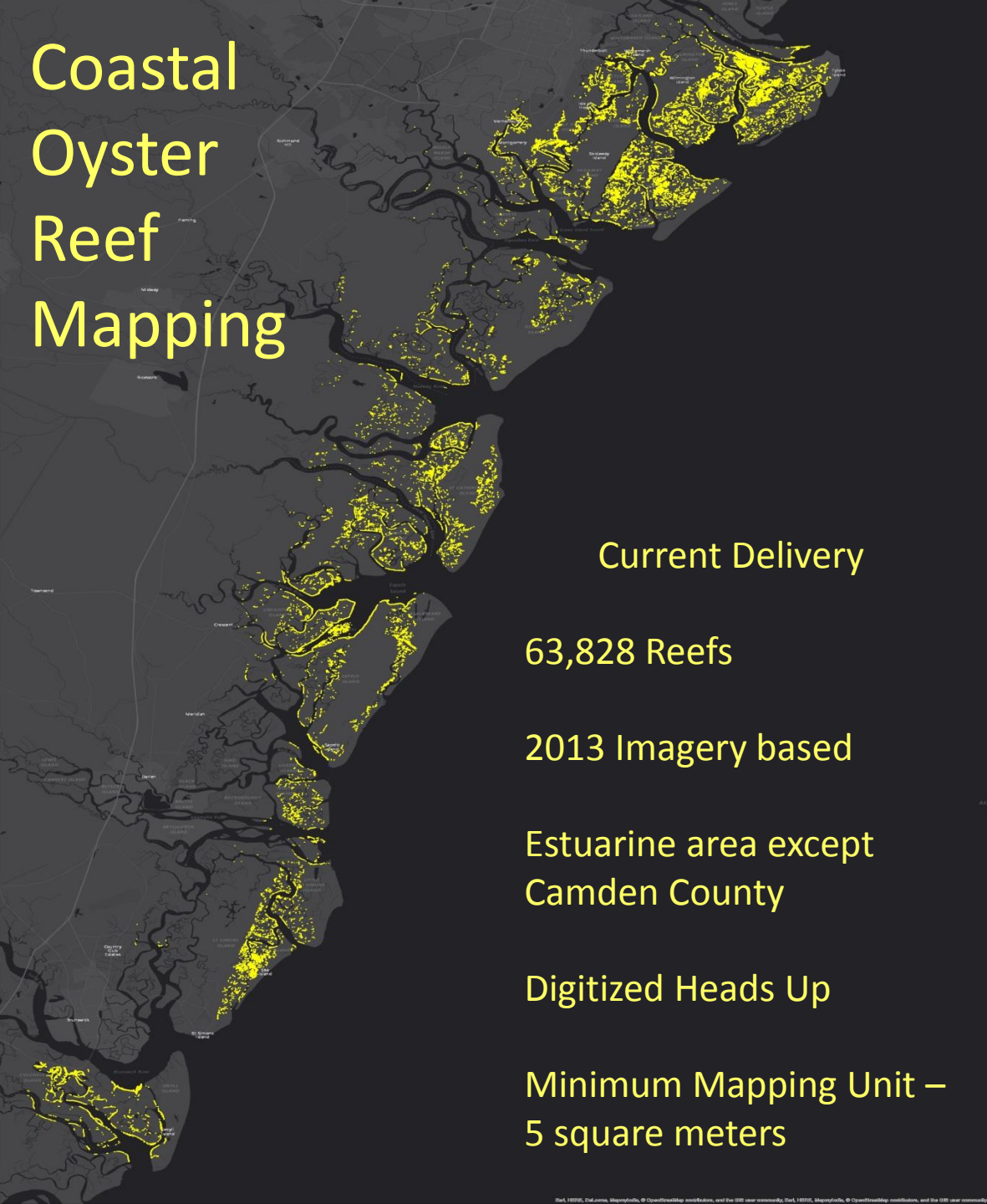
Link to the ArcGIS Tutorial Story Map

To view the story map containing the ArcGIS.com tutorials, click here: [GCAMP - ArcGIS Tutorials](#)



<http://geospatial.gatech.edu/GCAMP>

Coastal Oyster Reef Mapping



Current Delivery

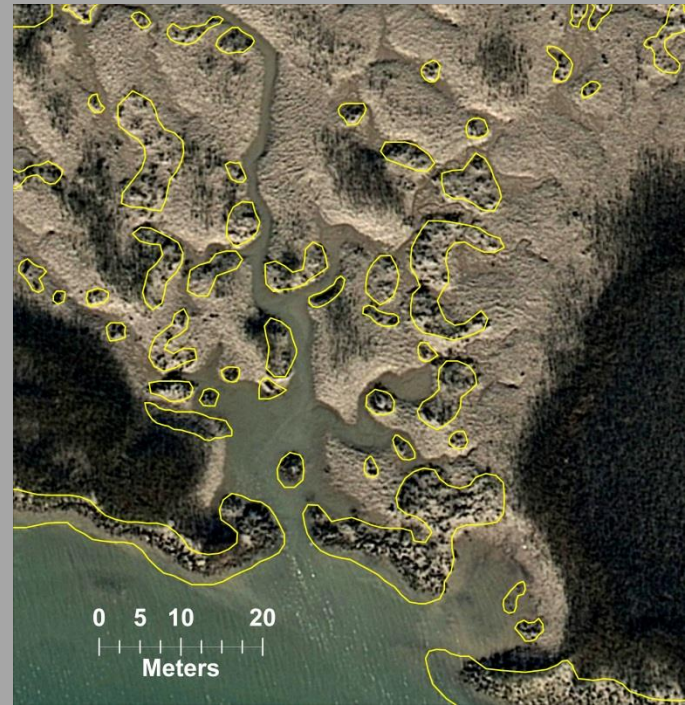
63,828 Reefs

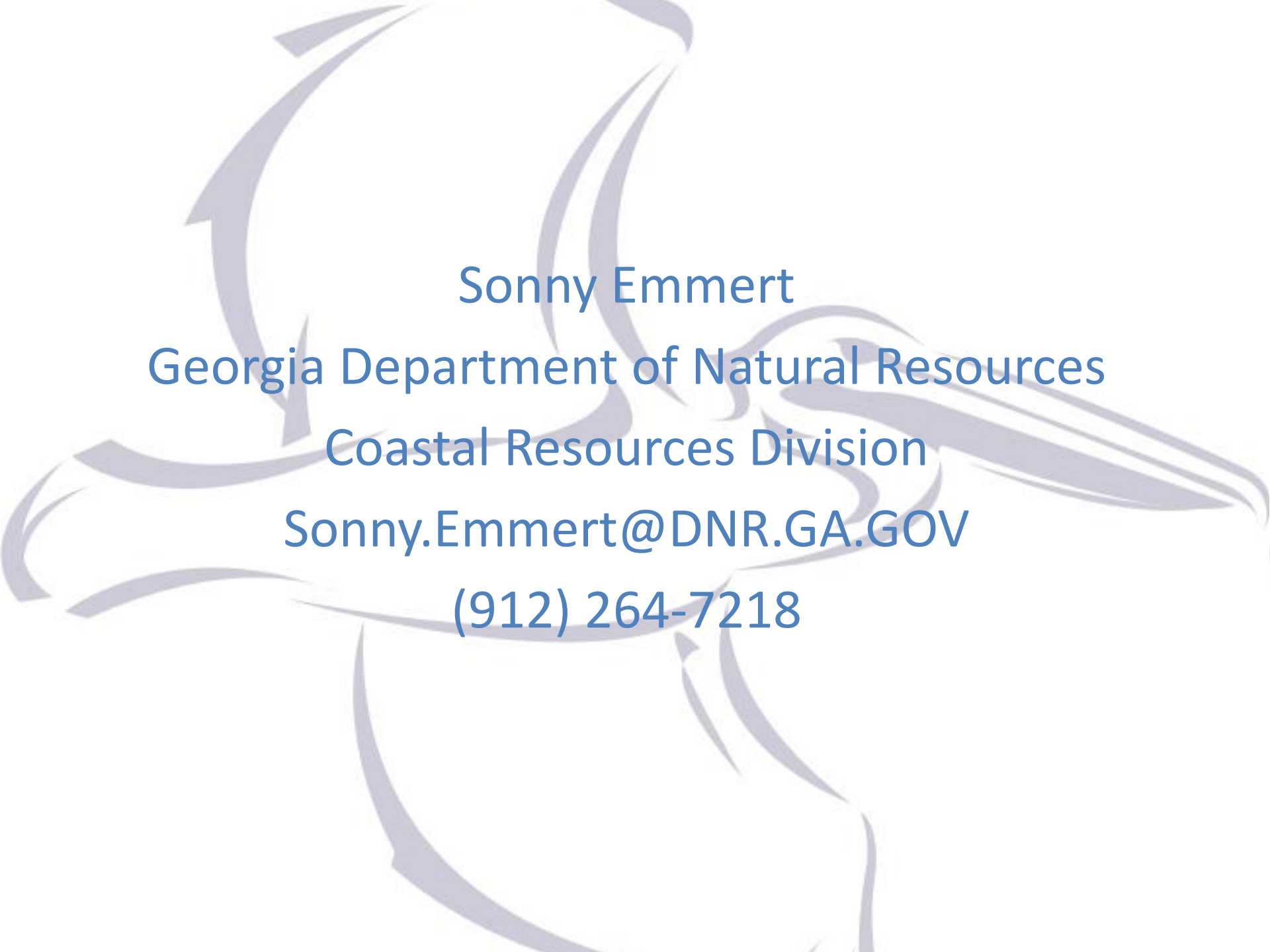
2013 Imagery based

Estuarine area except
Camden County

Digitized Heads Up

Minimum Mapping Unit –
5 square meters



A large, light purple, stylized graphic of a bird or wing is positioned in the background, behind the text. The graphic is composed of several curved, overlapping shapes that suggest the form of a bird in flight or a wing.

Sonny Emmert
Georgia Department of Natural Resources
Coastal Resources Division
Sonny.Emmert@DNR.GA.GOV
(912) 264-7218