



# 2010 Coastal Georgia Elevation Project

# LiDAR



## **Light Detection And Ranging**

Remote sensing technique that uses discrete light pulses and measures travel time.

# LiDAR



## Partners

Coastal Regional Commission

USGS

FEMA

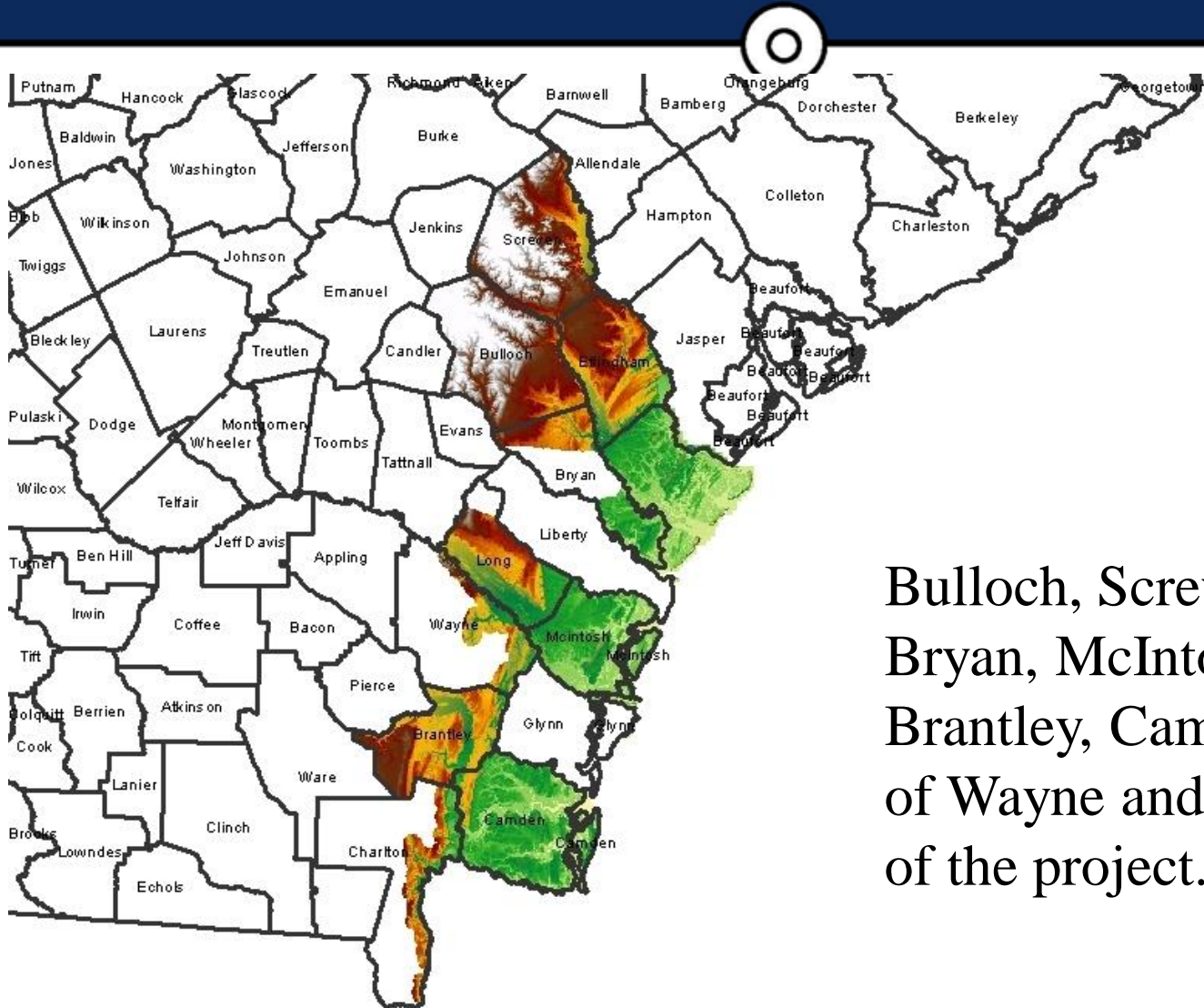
NOAA

SAGIS

Georgia Coastal Management Program

Local County Governments

# Coverage Area



Bulloch, Screven, Effingham, Bryan, McIntosh, Long, Brantley, Camden, and parts of Wayne and Charlton as part of the project.

Courtesy of SAGIS

# Specifications



- LiDAR points collected at an average of 1.0 meter point spacing
- Vertical accuracy of 18cm RMSE or better to support 2' contours
- Horizontal accuracy of 1.2 meters RMSE or better
- Hydro-breaklines and DEMs included with LAS pointcloud

# Uses



- D-FIRM updates
- Seamless National Elevation Dataset Product
- Data is being utilized in SLAMM
- Wetland Delineation
- Shoreline Mapping
- Archeology

# Availability



Dataset can be obtained from the Coastal Regional Commission. Contact David Dantzler by phone at 912-262-2800 or by email at [ddantzler@crc.ga.gov](mailto:ddantzler@crc.ga.gov)

It can also be downloaded from Digital Coast at:

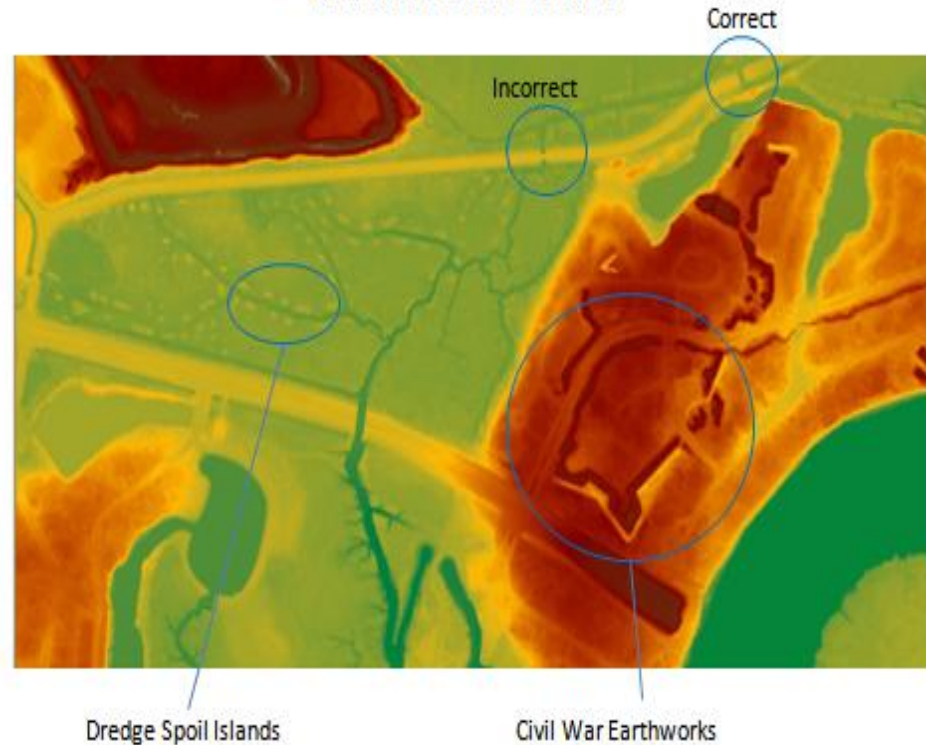
<http://www.csc.noaa.gov/digitalcoast/data/coastallidar/index.html>



# Examples



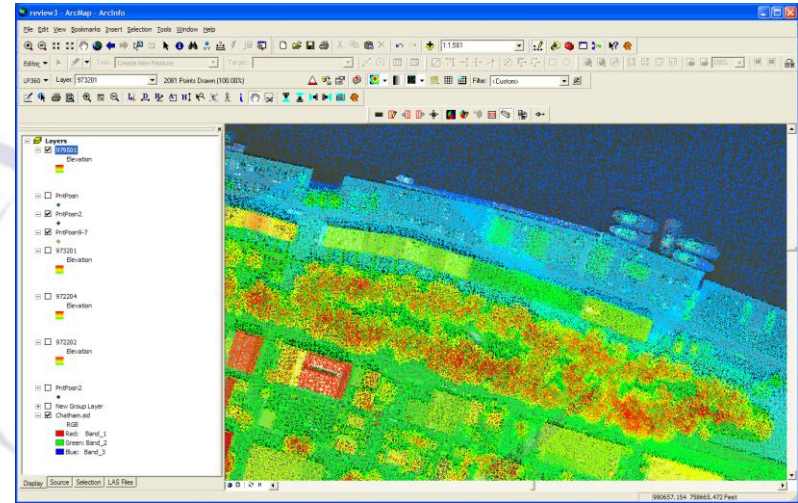
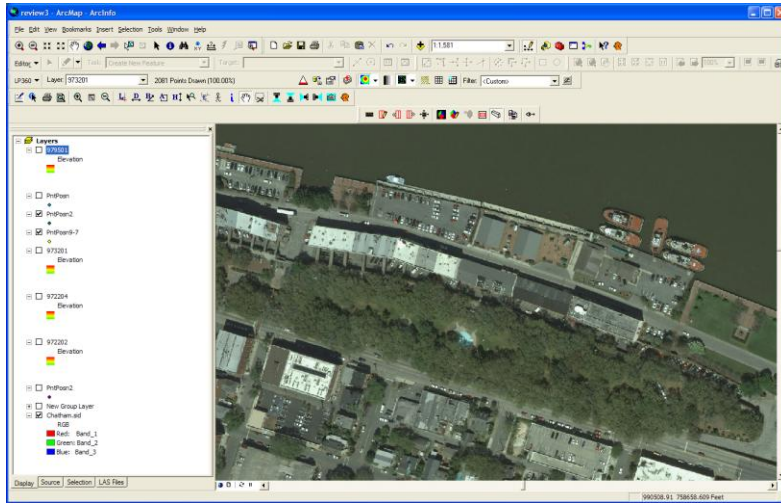
## Causton Bluff



Images courtesy of SAGIS



# Examples



3D application of LiDAR  
Images courtesy of SAGIS

