

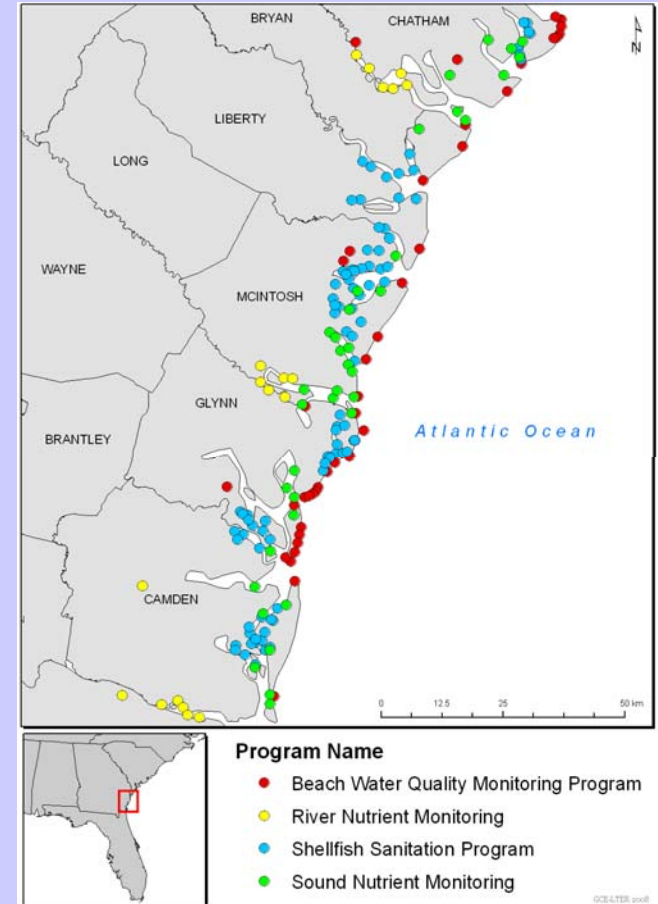
# Coastal Water Quality Indicators

Analysis of CRD **water quality** data for development of environmental water quality indicators for Georgia coastal waters

- Integrated **database** for all programs
- **Trends** and **correlations** among parameters

Dissolved oxygen	Water temperature	Turbidity
Ammonia	Nitrite	Nitrate
Total dissolved phosphorus	Orthophosphate	Silicate
Specific conductance	Salinity	pH
Fecal coliform	Enterococcus	

- Framework for classifying water quality **status**
- **Indicator variables** for Georgia coastal waters
- **Recommendations** for efficient continued monitoring



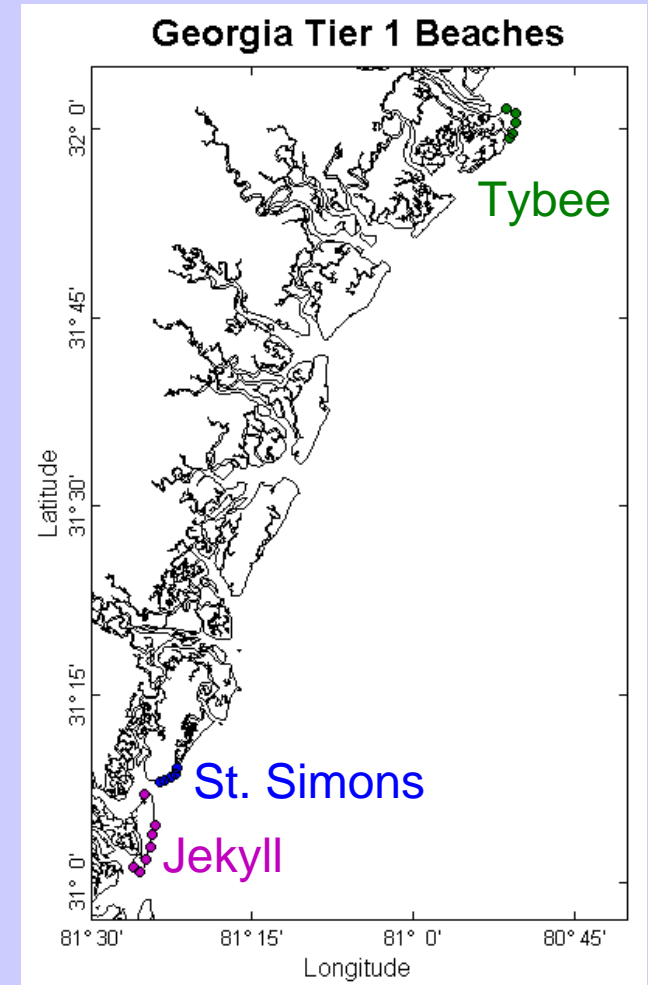
# Beach Sanitary Survey Analysis

Statistical support to CRD for **sanitary survey reports** on Georgia's **Tier 1 coastal beaches**

- Whether ***Enterococcus* abundance** or **beach advisories** during the past 5 years are statistically correlated with other factors

Turbidity	Drought
Water temperature	Tide
Rainfall	Bird migrations
River flow	pH
Salinity	Dissolved oxygen

- Identify **needs** for further study
- Identify ways to **streamline** current efforts

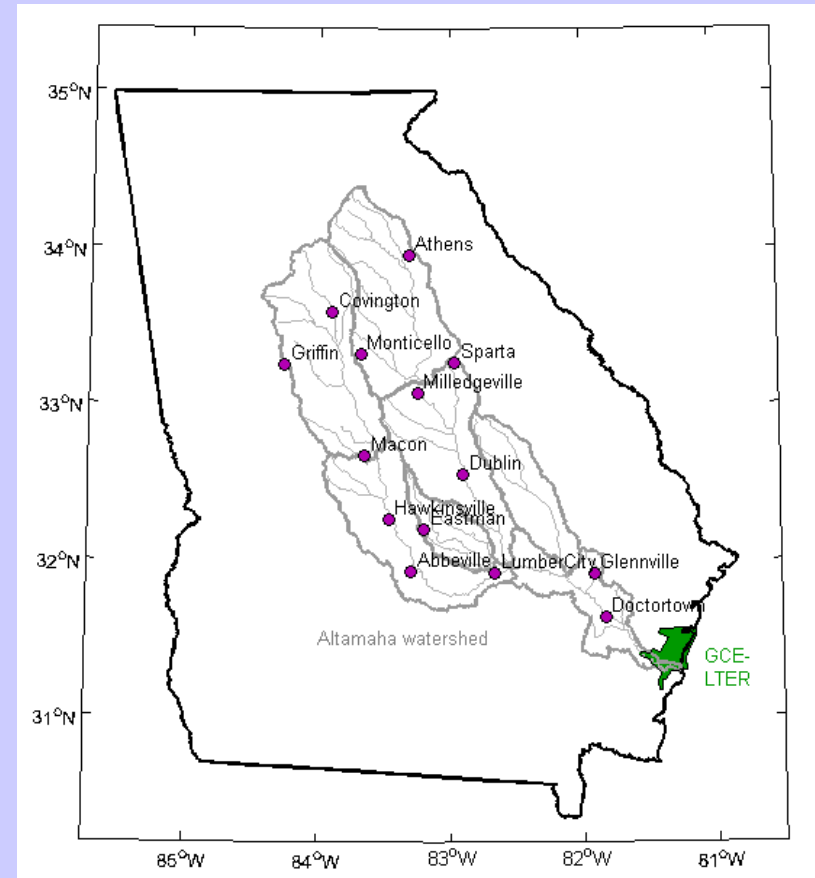


# Climate Signals and Coastal Georgia



Links between climate signals and freshwater delivery to the coast via the Altamaha watershed

- ✓ Bermuda High Index (BHI)
- ✓ El Niño/Southern Oscillation Index (SOI)
- ✗ North Atlantic Oscillation Index (NAO)



Joan Sheldon and Adrian Burd  
Dept. of Marine Sciences, Univ. of Georgia