

John Carroll

Assistant Professor of Biology

Georgia Southern University

- ▶ Dissertation work at Stony Brook University

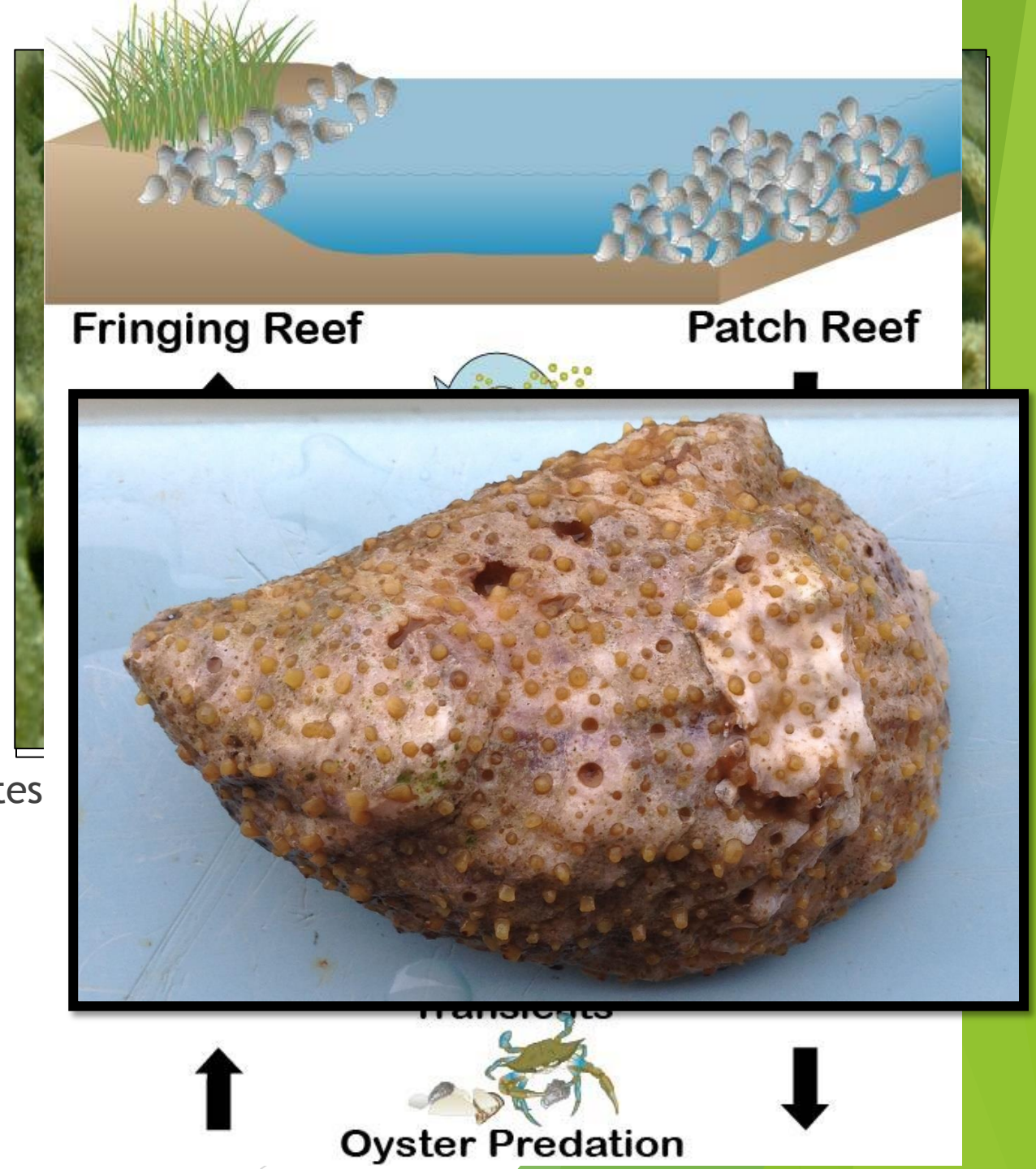


- ▶ Postdoc at University of North Carolina Wilmington

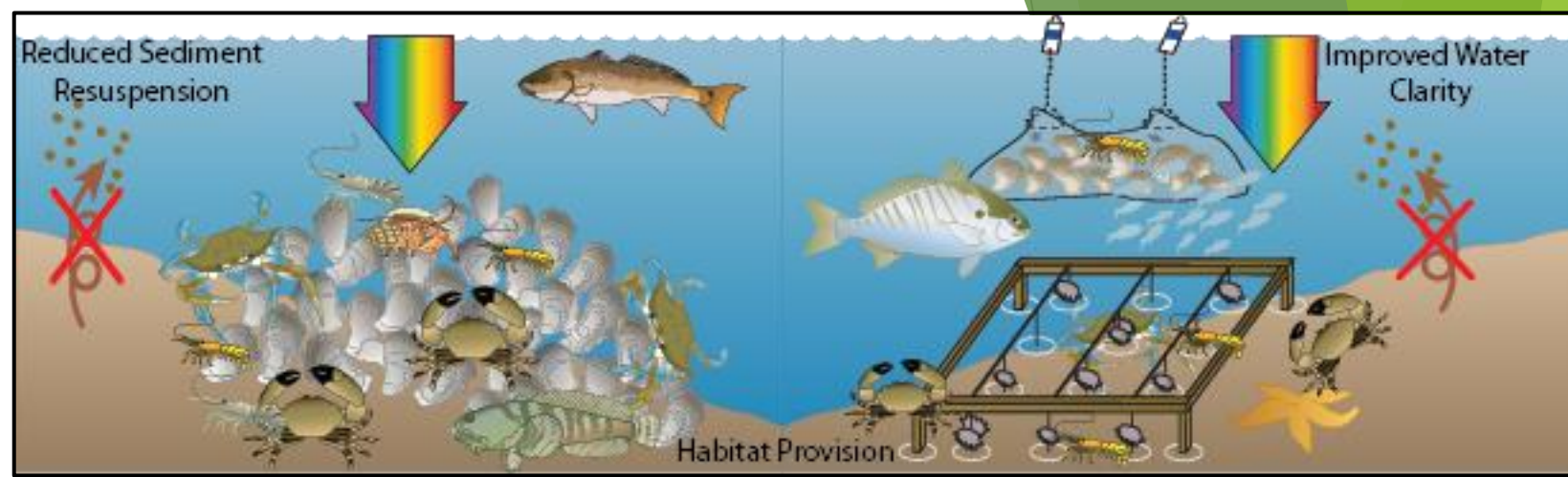


Previous Research

- ▶ Large scale bay scallop restoration efforts
- ▶ Applied ecological questions related to scallop management
- ▶ Seascape influences on oyster demographic rates
- ▶ Impacts of boring sponges on oysters



What I would like to do here



- ▶ Applied questions aimed at oyster aquaculture
- ▶ Become involved in restoration activities, including identifying redundant species to target for efforts
- ▶ Species interactions in the face of current and projected stressors
- ▶ Work with user groups

