

# Comparing Costs of Future Growth Scenarios in McIntosh Co.

JP Schmidt, Post-doctoral Associate, Marine Sciences, U.G.A.

Funding: Georgia SeaGrant, Long-term Ecological Research Network

## What is value of forested lands?

market goods    public goods

timber

water

recreation

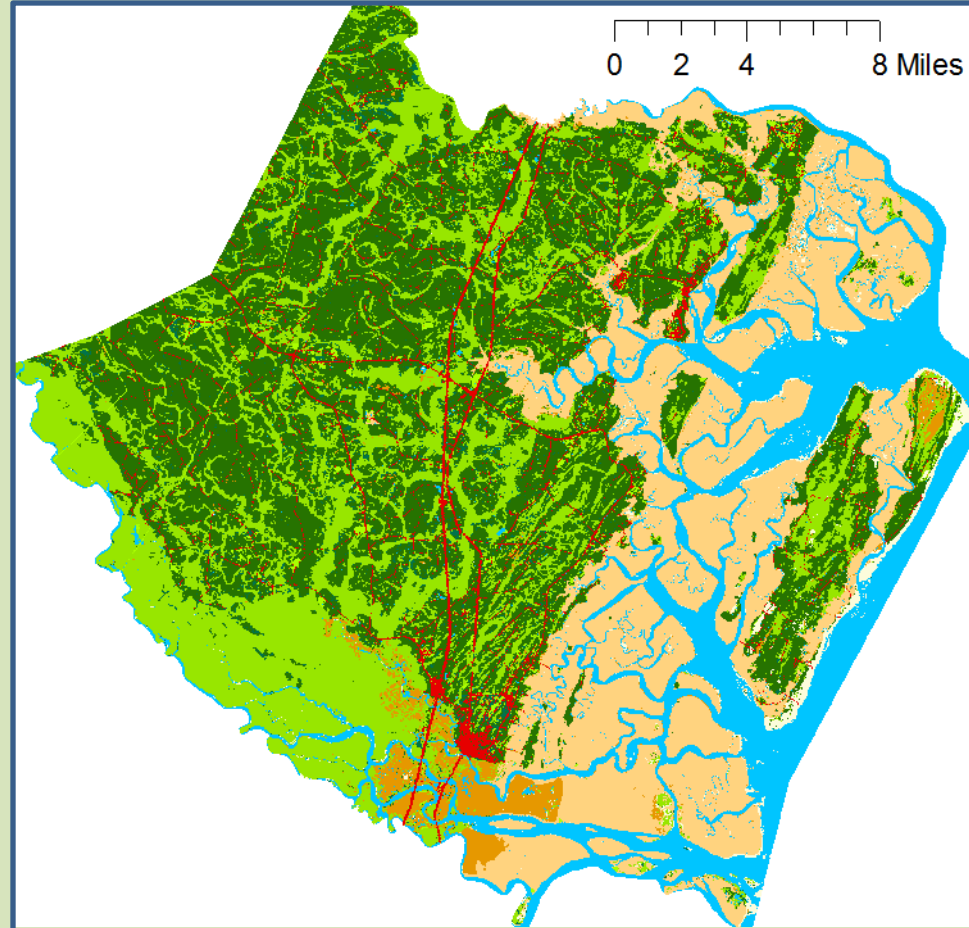
qual./quant.

carbon storage

biodiversity

## What is the value of wetlands?

- biodiversity
- water quality
- nursery/fisheries
- scenic/rec.
- carbon storage

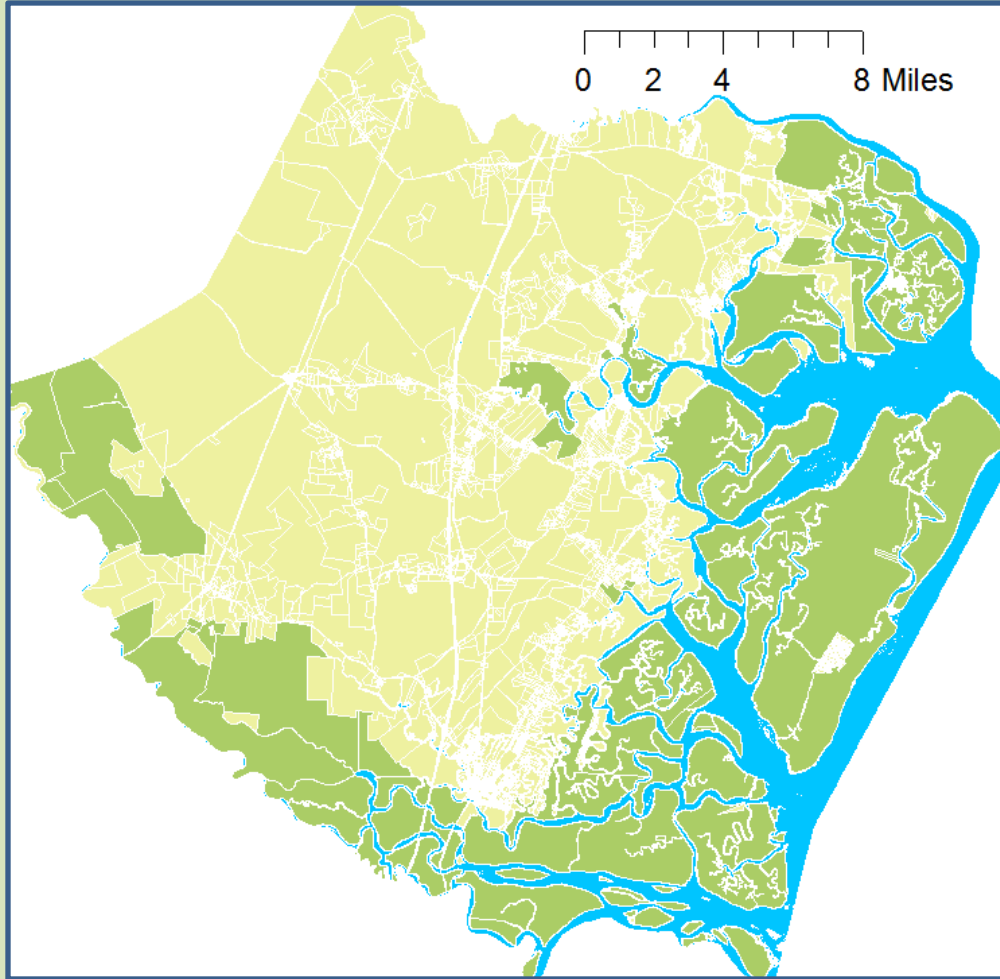


## Benefits, Amenities, Revenue

What are the main sources of **revenue** for McIntosh County?

How do revenue sources relate directly to **natural resources**?

What lands or **resources** in the county generate the greatest **value**?



## Costs, Losses

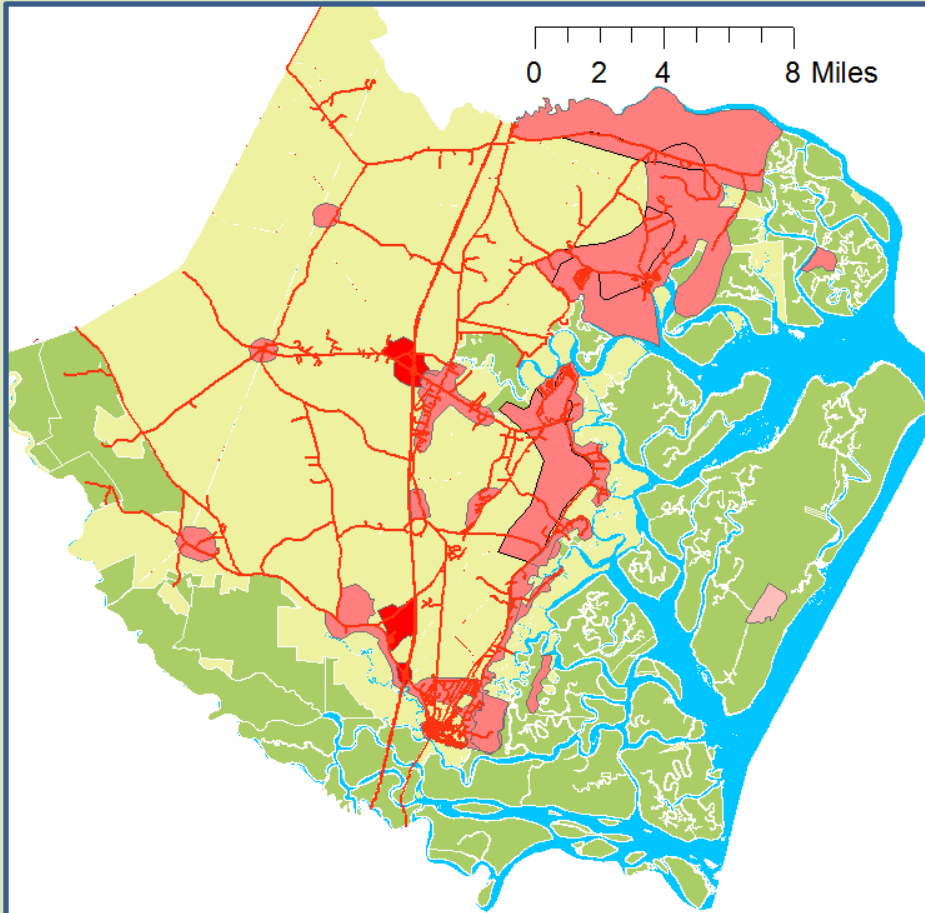
Where are **service costs** greatest currently?

- schools
- roads
- water/sewer
- police/fire/emt

Which **service costs** are likely to increase the most?

Where are ES losses greatest w/ development?

Can future land use be jointly optimized to both preserve **ES** and **reduce costs** to county government?



### Project goals:

- mapping value of forested lands and wetlands
- under contrasting development scenarios – **conservation vs. conventional**
  - mapping changes in **ES value**
  - comparing **cost of services**

### Data sources:

- county tax digest
- Forest Inventory and Analysis (USFS)
- value transfer studies (Moore, Brander)
- interviews with county mgmt