

Dale Bishop

Consultant

Murrells Inlet, SC
tdbish@sc.rr.com

Biodiversity of SE estuarine and marsh invertebrates
Description
Changes through time
Controls



GCE-LTER Research

Marsh mollusc population monitoring

Littoraria irrorata

Recruitment Studies

Callinectes sapidus

Crassostrea virginica

Non-commercial species

Schoolyard Program

K-12 teachers in the field with scientists



SINERR Research Projects

Oyster reef faunal surveys

Tidal flow restoration effects on communities

Non-indigenous species monitoring



Rogues' gallery of visitors to Georgia waters

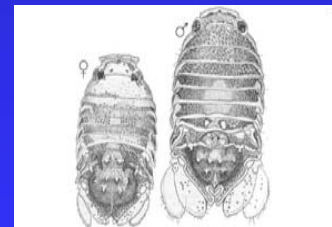


*



**

*



* Photo from the Southeastern Regional Taxonomic Center website
<http://www.dnr.sc.gov/marine/serc/Crustacean%20gallery.htm>

** Photo courtesy South Carolina DNR
From Smithsonian Marine Station at Fort Pierce website
http://www.sms.si.edu/irlspec/Megabalanus_coccapoma.htm

*** Photo from the Commonwealth Scientific and Industrial Research Organisation